



PROGRESSIVE MASSACHUSETTS
2022 Legislative
ENDORSEMENT QUESTIONNAIRE

Candidate: Richard Fierro

Office Sought: State Representative

District: 15th Suffolk

Party: Democratic Party

Website: www.electfierro.com

Twitter: [@fierro_richard](https://twitter.com/fierro_richard)

Facebook: [Richard Fierro](https://www.facebook.com/RichardFierro)

OVERVIEW

We view our questionnaire as an educational resource, for both candidates and voters, on progressive approaches to the issues. It provides candidates the opportunity to address a number of important issues beyond the surface talking points and provides progressive voters an extremely valuable resource when making a decision.

Our Questionnaire starts with an “About You” section and ends with an opportunity for you to include additional remarks beyond what we asked.

The bulk of our questionnaire is focused on the issues outlined in our [Progressive Platform](#), which also inform our [Legislative Agenda](#). We are interested in your overall philosophy as well as your views on specific policy and legislation.

Each section features charts or graphs (with links to sources) that illustrate one or more facets of the issue under discussion.

*Each section contains open-ended questions and YES/NO questions. **If the question is a YES/NO question, please answer either YES or NO.** Feel free to expand your answers, but **please keep answers < 150 words.***

Issue Subsections:

- A. Revenue and Taxation
- B. Jobs and the Economy
- C. Education
- D. Health Care
- E. Housing
- F. Racial and Social Justice
- G. Good Government and Strong Democracy
- H. Sustainable Infrastructure and Environmental Protection

I. About You & Your Governing Approach

1. Why are you running for office? And what would be your top 3 priorities if elected?

There are several major issues that the people of Massachusetts are facing, including housing shortages, food and financial insecurity, the opioid and addiction epidemic, student loan and consumer debt, obesity, declining mental health, and climate change. These issues oftentimes compound together, and negatively impact our most vulnerable communities the most, creating disharmony across the Commonwealth. I am running for office because I want to put forward real policy-oriented solutions to address and rectify our problems. I want to provide a voice for the next generation in our legislature, with a vision to secure a stronger future for everyone. My top three priorities are combating climate change through the funding of green and sustainable energy projects, providing subsidized Pre-K for all families in the Commonwealth, and to promote solutions for affordable housing and housing shortages.

2. What prepares you to serve in this capacity?

I have worked in several government offices in both city and state level. Working as a constituent aide at the City's 311 hotline gave me the ability to talk to and support the needs of the people, and to help them with the issues and service requests they had. I also learned the value of good communication and constituent service, and plan to utilize this experience as a representative. I also worked with the Governors' Operations Office within the Office of the Governor. In this role, I gained exposure to the intersection of business and government. I handled many business affairs tasks and worked alongside staff where I interacted with different executive offices and learned firsthand about the machinations of how our state government operates. I am also a student at Northeastern University, working toward a master's in public administration. These experiences and skills work together to give me the preparation to serve as a representative, to create and deliberate on legislation that will ultimately affect the people in the district, and the Commonwealth.

3. What do you view as the biggest obstacles to passing progressive policy at the state level, and how do you plan to overcome these obstacles?

The biggest obstacle to passing progressive policy is the fact that many bills will not make it passed Committee review. To remedy this, I believe there should be term limits installed for committee chairs, and secret ballot votes for House speaker. Also, all committee votes should be published and made public, making all representatives culpable to criticism for their voting behavior.

4. What is one policy pioneered by another state that you would like to see Massachusetts adopt?

The Ranked Choice Voting Act in Maine is a policy that I would like to see in Massachusetts. Ranked Choice Voting is a great way to increase the degree of representativeness and degree of democracy in our state and federal elections.

5. Provide an example of a time that you built a broad coalition to achieve a desired policy outcome.

I have not had the privilege of trying to achieve a policy outcome in any level of government, or in the communities I have lived.

6. (For incumbents only) Each year, Progressive Massachusetts compiles a scorecard of key roll call votes, available at <https://scorecard.progressivemass.com>. Please use this space to explain any discrepancies between your votes and the progressive position.

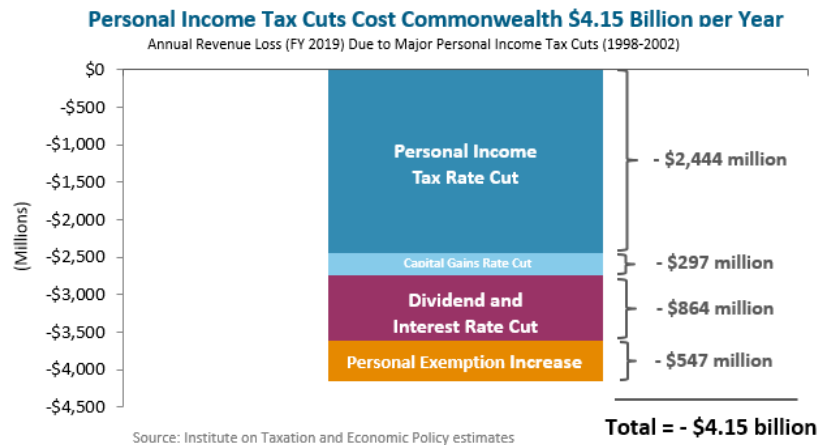
N/A

II. The Issues

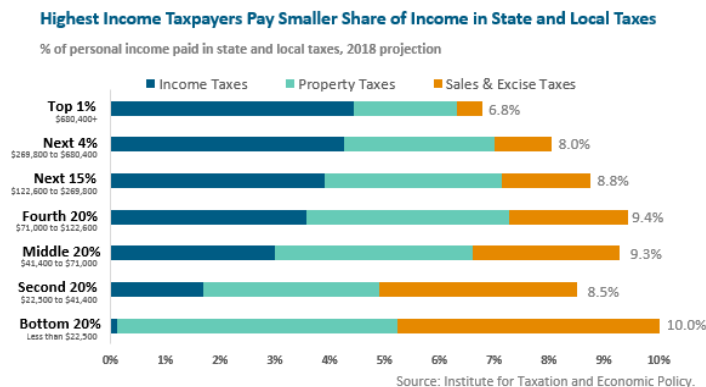
A. Revenue and Taxation

Between 1977 and 2016, Massachusetts [reduced state taxes](#) by more than all but two other states. Because of income tax cuts enacted between 1998 and 2002, Massachusetts loses over \$4 billion in tax revenue *each year*—\$4 billion that is not invested in our roads, bridges, schools, parks, and services, all of which have historically been part of why MA is a great place to live. Such cuts to the state income tax, combined with [low corporate income taxes compared to other states](#), have meant increasing reliance on fees, as well as sales, gas, and property taxes, exacerbating the overall regressivity of the system. Regressive taxation strains low- and middle-income families, and reduced revenue collection curtails our ability to invest in vital infrastructure. It also restricts legislators' ability—and willingness—to pass new and visionary legislation, as there is a continual shortage of funds for existing priorities.

Declining revenues have meant drastic cuts, limiting our ability to invest in our communities and future economic stability.



Massachusetts state and local taxes are regressive.



1. **Please explain your principles and proposals relative to this issue, and what work you personally have done to advance them (legislation, community work, published writings, etc.).**

I believe the state's tax policies should be progressive, and actively tax lower income taxpayers much less, and provide more deductions and credit opportunities to lower income taxpayers. I personally want to increase the maximum rental payment deduction from \$3,000 to \$6000, serving to reduce the income tax burden for renters. I also want the State's income tax standard deduction to at least match the federal government's income tax standard deduction; ideally allowing a state income tax standard deduction of \$20,000. It is known that a vast majority of state revenue comes from sales taxes and income tax paid by the highest earners. It does not make sense to tax the lowest income earners as much as is currently done, and we must reform our tax policies to help the lowest income earners. Also, I want to increase the corporate income tax rate by at least a quarter of a percent to 8.25% but support higher increases to the corporate income tax rate. In addition, I support raising the minimum capital gains income tax rate and increasing individual income on the highest income earners via the Fair Share amendment. In the state, if we continue to collect higher amounts of tax revenue, then we must plan to utilize these funds and put them to good use and programs to assist the people. If we find ourselves in a position where the state has a vast budget surplus, then the state should look to decrease the amount of taxes collected, especially from lower and mid income earners, or to make heavy investments in climate resilience, education, housing, and child care.

2. **Corporate Tax Breaks.** Corporate tax breaks cost Massachusetts [more than \\$1 billion in foregone revenue](#) each year. Companies can secure access to such tax breaks due to political connections whether or not the promised benefits ever materialize. Which of the following accountability steps would you support?

a. **Collecting and publicly disclosing information about the benefits to the state from any tax break?**

YES.

b. **Repealing any tax break that does not provide the intended benefits in a cost-effective manner?**

YES.

c. **Establishing sunset dates for all tax breaks so that they must come up for periodic review?**

YES.

3. **Fair Share.** Do you support the proposed constitutional amendment to increase the tax on annual income over \$1 million by 4%, with the resulting revenue devoted to public education and transportation needs (Fair Share Amendment)?

YES.

4. **Progressive Revenue.** The Fair Share Amendment ballot initiative will raise much-needed revenue for our commonwealth, but we will require more resources to meet current needs. Do you support the following measures to make a more progressive tax code?

a. **Raising the corporate minimum tax for larger companies? (The corporate minimum tax is currently only \$456.)**

YES.

b. **Imposing a tax on the portion of corporations' US profits that are shifted to offshore tax havens?**

YES.

c. **Raising the corporate tax rate from 8% to 9.5% (where it stood in 2009)?**

YES.

d. **Raising the tax on long-term capital gains from 5% to 8.95%, in line with states like New York and Vermont?**

YES.

e. **Levying a modest tax on university endowments greater than \$1 billion?**

YES.

5. **PILOT Reform.** Massachusetts is home to some of the world's most prestigious cultural, educational, and medical institutions, but many of them are exempt from property taxes.

a. **Do you support enabling cities and towns to require large tax-exempt not-for-profit institutions (i.e., with property valued at or above \$15 million) to make payments in lieu of taxes to the municipality equal to 25 percent of the amount that would be paid if they were not exempt?**

YES.

b. **Would you support requiring the Department of Revenue to regularly collect the data on the financial impact of lost tax revenue from tax-exempt institutions?**

YES.

6. **Public Bank.** Do you support the creation of a Massachusetts [public bank](#) that would make loans to small businesses, local farmers, cooperatives, community development financial institutions, community development corporations, and municipalities?

YES.

7. **Divestment.** Do you support divesting public investments from private prisons, fossil fuel companies, and weapons manufacturers?

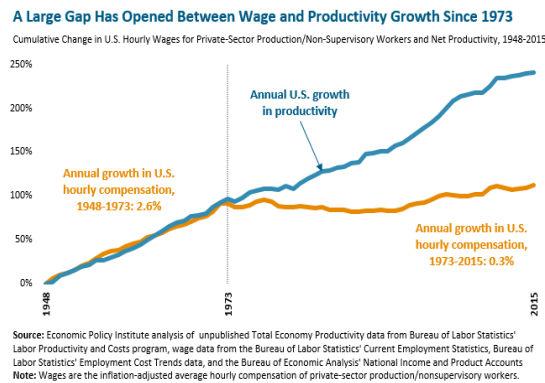
YES.

B. Jobs and the Economy

Massachusetts ranks as one of the top ten [most unequal states](#), as the gains from economic growth have disproportionately benefited the already well-off. Compounding this, we are one of the most expensive states in the country for [health care](#), [housing](#), and [child care](#), all of which strain wages. A strong economy depends on strong wages, as workers spend and help local economies thrive. Although the recently passed minimum wage increase will eventually lift the minimum wage to \$15 per hour, this is [still not a living wage](#) for many.

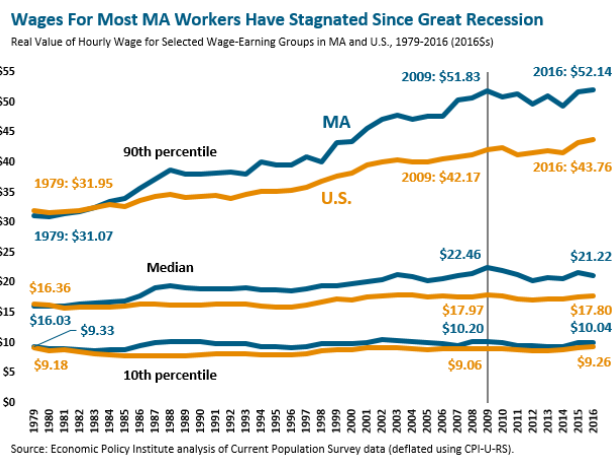
In recent decades, unions have been under attack. However, unions played—and continue to play—a pivotal role in creating a strong middle class. With weaker unions (or no unions at all) come weaker social and economic rights and an imbalanced economy.

Productivity has grown significantly since the 1970s, but it is not being reflected in higher wages.



<https://archive.massbudget.org/reports/swma/>

Wages for most MA workers have remained stagnant since the Great Recession.



<https://archive.massbudget.org/reports/swma/wages-income.php>

1. Please explain your principles and proposals relative to this issue, and what work you personally have done to advance them (legislation, community work, published writings, etc.)

The minimum wage of \$15 an hour is a good base to build upon, and first I would want to ensure that all workers, service, tipped, and contracted workers are paid their fair wage and true wage required by law. I want to increase the funding distribution for technical assistance grants and opportunity grants for entrepreneurs and small businesses. I want to implement programs of state-level earned income tax credits for lower income households, for families with dependents, state level child tax credits, tax credits for single parent households, and tax credits as a form of wage subsidy for low income and working-class earners. I am also pro-labor and pro-union, and I want to expand workers' rights to unionize and to collectively bargain.

2. One Fair Wage. Do you support eliminating the subminimum wage for tipped workers?

YES.

3. Wage Theft. Do you support holding businesses responsible for the wage violations of their subcontractors when the work they do is substantially connected to the company's operations?

YES.

4. Wage Transparency. Would you support requiring the submission of wage data to a public database maintained by the Executive Office of Labor and Workforce Development and broken down by gender and race?

YES.

5. Fair Scheduling. Many workers in the service sector face irregular working hours, making it difficult to plan for other life events. Do you support providing workers the right to 14 days advance notice of hours and the right to request specific hours without retaliation from the employer?

YES.

6. Mandatory Arbitration. Would you support legislation to prohibit the use of mandatory arbitration provisions in employment contracts, i.e., requirements that an employee forfeit the right to sue the employer for discrimination, nonpayment of wages, or other illegal conduct?

YES.

7. Paid Vacation Time. The US is the only advanced industrial country to not guarantee workers paid vacation time to use as they wish. Would you support making Massachusetts the first state to require employers to provide paid vacation time to their workers?

YES.

8. **Paid Leave for Municipal Workers.** In 2018, MA passed the strongest paid family and medical leave law in the country. However, the law did not include municipal workers. Would you support extending the law to make sure that municipal workers have access to these vital benefits?

YES.

9. **Gig Economy.** More than 200,000 workers in Massachusetts now work in the “gig economy,” with the rise of app-based platforms. However, their employers often seek to evade labor law in order to avoid treating them as employees and provide decent pay and benefits.

- a. **Do you oppose the November 2022 ballot initiative backed by Uber and Lyft to rewrite current state labor law to exclude hundreds of thousands of workers from fundamental rights and protections?**

YES.

- b. **Will you oppose all legislation that weakens Massachusetts’s labor law protecting employees from being misclassified as “independent contractors”?**

YES.

10. **Worker Ownership.** Do you support allocating state funding (grants, loan guarantees, technical assistance funds) to support worker-owned and governed businesses and cooperatives in Massachusetts?

YES.

11. **Worker Governance.** Would you support incentives and/or requirements for large MA corporations to allow workers to elect at least some members of the board?

YES.

12. **State House as a Workplace.** Although the Legislature voted in 2017 to increase legislators’ pay, the Legislature has not taken necessary steps to ensure staff are being properly compensated. Staff are often overworked and underpaid, leading to burnout and making it difficult for the State House to retain diverse talent.

- a. **Do you support the unionization effort of the Massachusetts State House Employee Union?**

YES.

- b. **If elected, are you committed to creating a safe work environment for all of your employees in which harassment, especially sexual harassment, is not tolerated?**

YES.

- c. **Do you support the creation of an independent commission to investigate and report on complaints of workplace and sexual harassment in the Massachusetts Legislature?**

YES.

C. Education

Public education plays a fundamental role in democracy, cultivating informed, well-rounded community members and providing the knowledge and skills needed for economic mobility and opportunity. Although our public education system gets high marks overall, it remains one of the [most unequal](#) in the country, with significant opportunity and resource divides based on income and race. In 2019, Massachusetts passed the Student Opportunity Act to update the formula for state aid to public school districts and correct these inequities, but schools have faced added strains due to pandemic.

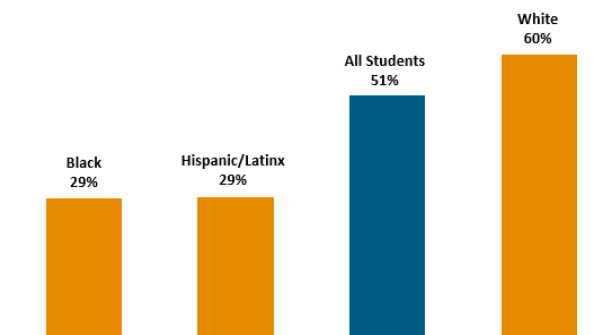
Public education has also been under attack by powerful corporate interests seeking to undermine public schools, teachers, and unions. These groups invest millions of dollars to promote the expansion of privately run charter schools, which siphon money from our public K-12 districts while largely excluding students with the greatest needs. Costly, mandated standardized test results are used to label schools as “failing” and justify these privatization schemes. State receiverships in struggling school districts take power away from communities and often facilitate privatization schemes that could never achieve democratic support.

At the same time, our understanding of education has also broadened. No longer do we only talk about K-12 education; rather, most of the [fastest-growing occupations](#) require education beyond a high school diploma. Massachusetts has been disinvesting from public higher education for the past two decades, leading to higher tuition costs and putting students at risk of long-term debt (if they are even still able to attend). Our public colleges and opportunities are an economic engine for local economies as well as a pathway to economic opportunity, and when that opportunity is cut off for students, we all lose out.

Massachusetts has significant achievement gaps reflective of resource gaps.

Massachusetts Has Significant Achievement Gaps for Youth of Color in 4th Grade Reading

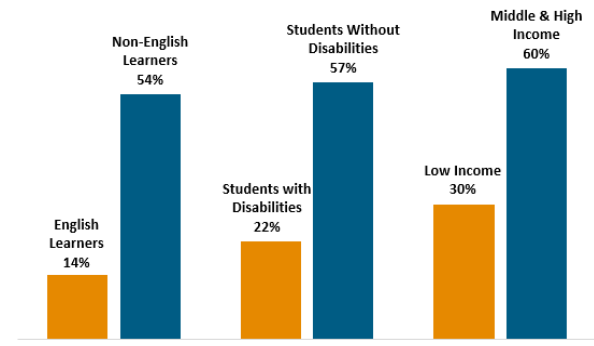
Share of MA 4th Graders Proficient on the 2017 NAEP Reading Exam, by Student Race, all students



Source: National Center for Education Statistics, 2017

Massachusetts Has Significant Achievement Gaps for Disadvantaged Youth in 4th Grade Reading

Share of Mass. 4th Graders Proficient on the 2017 NAEP Reading Exam, by Student Category



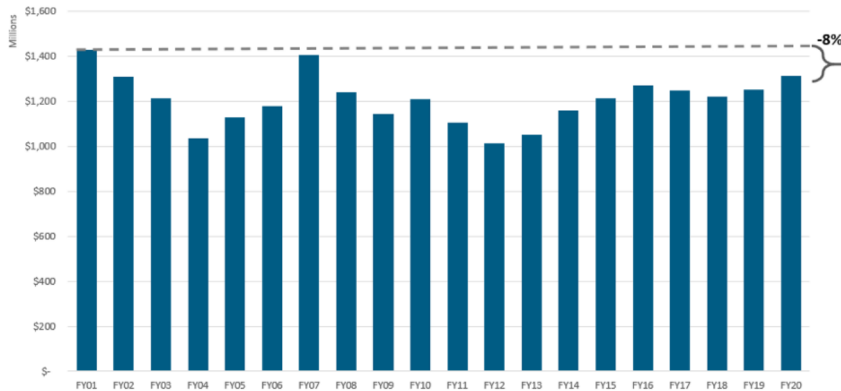
Source: National Center for Education Statistics, 2017

https://archive.massbudget.org/report_window.php?loc=Towards-Equity-School-Funding-Reform-in-Massachusetts.html

Massachusetts has been disinvesting from higher education and shifting the cost burden onto students.

Massachusetts Has Cut Spending on Higher Ed. by 8 Percent Since FY 2001

State spending on higher education, FY 2001-2020 adjusted to inflation (2020 \$)



Note: FY 2007 total is adjusted downwards to account for the fact that significant funding during this year was for capital investments that supported activity during other fiscal years.

- 1. Please explain your principles and proposals relative to this issue, and what work you personally have done to advance them (legislation, community work, published writings, etc.).**

I want to fund a universal Pre-K program to ensure that each school district has the resources and capabilities to operate a Pre-K for small children in their communities. Every family in the state should be able to afford and choose to send their children to Pre-K programs before they start their K-12 education. In addition, I want to use Student Opportunity Act funds to expand investment in ELL programming, special education programming, and support for low-income students. I support the bill to implement a moratorium on MCAS testing, and to decentralize student performance standards to the local and school district level of governance. I oppose state receivership of public schools as an attempt to improve them. I support increased spending for directly increasing teacher salaries. I also believe that many students feel as if traditional higher education and college is just not for them, and we should fund and promote vocational and trade schools as a viable and reasonable option for students to pursue after their high school education. Lastly, I support funding programs to provide tuition-free community college for all Massachusetts residents.

- 2. Early Education and Child Care.** Do you support the Common Start Coalition's proposal to establish a robust system of high-quality, affordable early education and care for children from birth through age 5, as well as after- and out-of-school time for children ages 5-12, and for children with special needs through age 15?

YES.

- 3. Standardized Testing.** Massachusetts is now one of just 10 states for which an assessment like the MCAS is a condition for graduation. Would you support ending this requirement and allow students, especially students with disabilities, to have several pathways to demonstrate that they have met required competency standards?

YES.

4. **Charter Schools.** In 2016, MA voters overwhelmingly rejected a ballot initiative to lift the cap on charter schools given the millions of dollars it would have siphoned away from public school districts.

- a. **Do you support keeping the cap on charter schools?**

YES.

- b. **Would you support legislation to bring greater accountability to charter schools by requiring them to adhere to the same disclosure and disciplinary standards and offer the same support for English Language Learners and students with disabilities as public school districts?**

YES.

5. **Receivership.** The Lawrence Public Schools, Holyoke Public Schools, and Southbridge Public Schools are currently under state receivership, with a state-appointed receiver assuming the powers of a superintendent or democratically elected school committee. The state takeover has not produced sustainable gains and has at times been characterized by [chronic mismanagement](#). Would you support ending the practice of state receivership and returning power to democratically elected school committees?

YES.

6. **Comprehensive Sex Education.** Do you support requiring public schools that teach sexual health education to provide age-appropriate, medically accurate information that is inclusive of all sexual orientations and gender identities and includes topics such as consent and the effective use of contraception?

YES.

7. **Anti-Racist Education.** Curricula that reflects students' lived experiences and actively engages them in antiracism is crucial for students today. Would you support legislation that incentivizes districts to develop Ethnic Studies programs?

NO.

8. **Higher Education Access.** Do you support granting in-state tuition and financial aid to undocumented students?

YES.

9. **Debt-Free College.** Do you support making tuition (and mandatory curriculum fees) free at public colleges and universities?

NO.

D. Health Care

Massachusetts has led the way in providing near universal health insurance coverage, with [97% of the state](#) having health insurance. But until that is 100%, we haven't reached truly universal coverage or tackled critical barriers to accessing care. Disparities in insurance coverage and health care access continue to exist along income, racial, and education lines. Premiums continue to rise, and high deductibles mean that many do not get the health care they need—or suffer from long-lasting debt if they do. We still spend an oversized portion of public and private money on health care, but without necessarily achieving better health outcomes. The pandemic has put a spotlight on these health care inequities and the need to invest in a stronger public health infrastructure and be more resilient for the pandemics and challenges of the future.

Massachusetts health insurance premiums have skyrocketed over the past two decades.

Massachusetts health insurance premiums have tripled in 19 years and consume an ever-larger portion of earnings for middle class families.

Average total cost for Massachusetts family health insurance premiums and national cost of a new compact car



The share of middle-class commercially-insured Massachusetts families with more than ¼ of total earnings going to health care rose from 28% in 2013-2015 to 33% in 2016-2018.

Notes: Data are in normal dollars of the year shown.

Sources: Family Health Insurance premiums are for Massachusetts from the Agency for Health Care Quality – Medical Expenditure Panel Survey, Insurance Component. Car cost information is based on car-specific inflation from the BLS and the compact car price index from Kelly Blue Book.

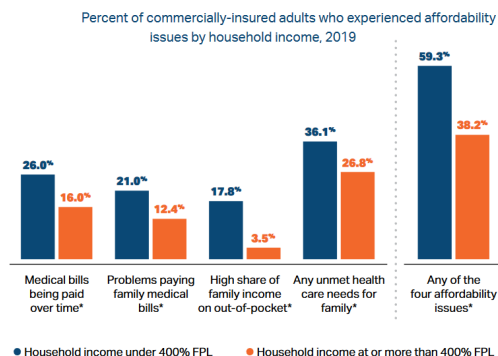
<https://www.prnewswire.com/news-releases/average-new-car-prices-up-nearly-4-percent-year-over-year-for-may-2019-according-to-kelley-blue-book-300860710.html>

Earnings calculation includes employer premium contribution in both health care payments and in earnings total. See Massachusetts HPC 2019 Annual Cost Trends Report (p. 15)



Image411

Many MA residents face difficulty paying health care bills.



1. **Please explain your principles and proposals relative to this issue, and what work you personally have done to advance them (legislation, community work, published writings, etc.).**

I support the effort to switch to a single payer healthcare system as proposed in H.1267 An Act establishing Medicare for all in Massachusetts. In this bill, there are sections dedicated to outlining the method of funding for and budgeting for the health plan. I believe funding for healthcare should be secured in full every year and that the Legislature's budget plan fully funds healthcare for the long term in their budget. I also want to support legislation that would close the health gap for black patients, especially black women who are three times more likely to die from childbirth. We need to do better to improve the health and wealth of our marginalized communities. In addition, I support legislation to require insurance companies to fully cover prenatal care, and all medical treatment related to child birth and pregnancies.

2. **Single Payer.** Would you support legislation to enact a single payer health care system in Massachusetts, which would guarantee health insurance as a right?

YES.

3. **Whole-Person Health.** Would you support legislation adding oral health and dental services as a requirement of state standards for MassHealth and commercial Accountable Care Organizations (ACOs) and other value-based care models?

YES.

4. **Reproductive Justice—I.** Do you support requiring health insurance plans to cover all pregnancy care, including abortion care, prenatal care, childbirth, and postpartum care, without any kind of cost-sharing?

YES.

5. **Reproductive Justice—II.** Would you support the creation of an uncompensated care program to reimburse abortion providers for services they provide to individuals

without other means of paying for care, including those individuals traveling from out of state who would have qualified for MassHealth if they lived in the state?

NO.

6. **Reproductive Justice—III.** Young people under sixteen seeking an abortion must obtain parental consent or judicial authorization. While most young people involve their parents, many cannot, causing delays to timely medical care and counseling. Scared teens may also turn to dangerous measures: going out of state or risking their lives and health with illegal or self-induced abortion. Would you support repealing this restriction on young people's access to abortion?

YES. Yes, I support repealing this restriction of having parental or judicial authorization for young people to obtain an abortion procedure. I believe this protection is included in the ROE Act, which I support.

7. **Menstrual Equity.** Would you support providing access to free menstrual products in schools, shelters, and prisons?

YES.

8. **Harm Reduction.** An essential part of addressing the opioid crisis, safe consumption sites allow medical professionals to respond to overdoses and engage participants in medical and behavioral health services. Would you support the legalization of SCSs?

YES.

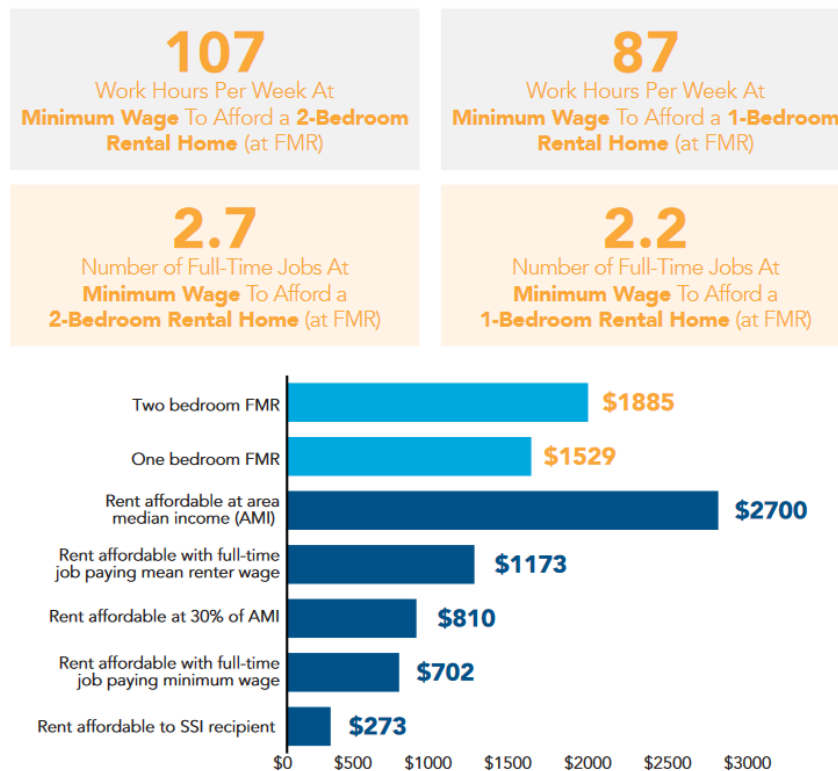
9. **Community Immunity Act.** Would you support strengthening the Commonwealth's immunization policies by standardizing the immunization requirements for all schools, daycare centers, and other covered programs and centralizing within the Department of Public Health (DPH) the processes for obtaining an exemption from those requirements?

YES.

E. Housing

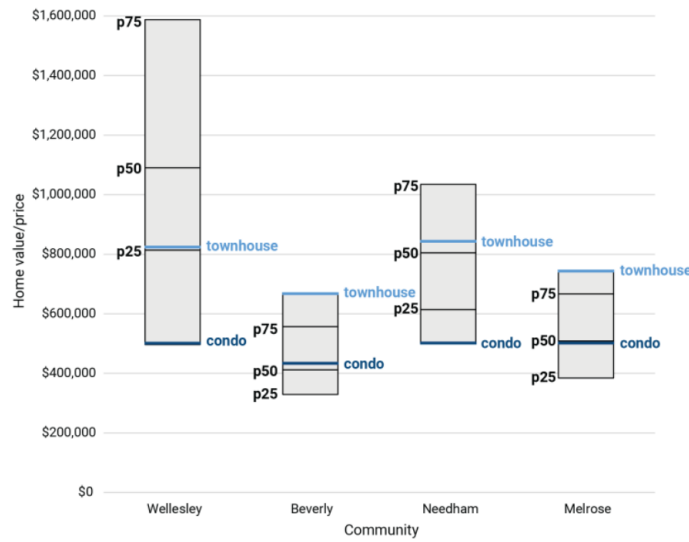
Massachusetts has a lot to offer, but that does little if people can't afford to live here. The [US News & World Report's annual state rankings](#) put Massachusetts at #40 in housing affordability (and #47 in cost of living). A worker earning minimum wage in Massachusetts would have to work [87 hours a week](#) to afford a modest one-bedroom rental home at market rate (and 107 hours for a modest two-bedroom). Over the last ten years, the need for affordable housing has increased, while funds for affordable housing have decreased at both federal and state levels. This is unsustainable. It has led to expanding economic inequality, increased homelessness, and damage to our economy, as talented workers often leave the state for less expensive regions.

With rental increases far outpacing wage increases, many are left with housing instability.



The overreliance of single-family housing in suburban development, as opposed to denser or multi-family housing, makes communities unaffordable.

Small multifamily condos expand affordability in the wealthiest communities
 Comparing prices of new townhouses and condos to existing homes



Source: Existing home values taken from the Census Bureau's American Community Survey 2014-2018. Prices for new townhouses and condos from Crump, Mattos, Schuetz and Schuster (2020). **B** Metropolitan Policy Program at BROOKINGS

1. **Please explain your principles and proposals relative to this issue, and what work you personally have done to advance them (legislation, community work, published writings, etc.).**

I support programs to increase the supply of housing units with the construction of multi-story high density apartment buildings. These new buildings should serve working-class residents and families. I am against the construction of luxury apartments for transient populations; we must provide affordable housing that serves the longtime residents and families of our neighborhoods. Many residents rely on public transit and do not need a car for their daily commute; therefore, we should also reduce parking space requirements for constructing new apartment buildings. Increasing the housing supply and increasing the number of units available to people, will alleviate pressure in the housing market and bring down prices. In addition, we must eliminate tenant responsibility for real estate broker's fees on rental units to ease the burden of upfront rental costs in the district.

2. **Homeless Bill of Rights.** Would you support the creation of a Homeless Bill of Rights that extends anti-discrimination protections to persons experiencing homelessness, including protections when seeking employment, housing, voter registration, and access to public spaces and places of public accommodation; and secures the right of persons experiencing homelessness to rest, seek shelter from the elements, occupy a legally parked car, pray, eat, and avoid needless harassment in public spaces?

YES.

3. **Affordable Housing Funding—I.** Would you support legislation to allow cities and towns to impose a fee on real estate transfers to generate revenue for affordable

housing, with the ability to create local exemptions as appropriate?

YES.

4. **Affordable Housing Funding—II.** Would you support doubling the current Deeds Excise Tax (from \$4.56 per \$1,000 to \$9.12 per \$1,000), upon the sale of real property in Massachusetts, to create a new funding stream to be split evenly between affordable housing and climate resiliency?

YES.

5. **Social Housing.** Would you support the creation of a state social housing authority to produce and preserve mixed-income homes that are union-built, sustainable, collectively owned, affordable for all income levels, and financially self-sustaining?

YES.

6. **Tenant Protections.** Would you support providing municipalities with the authority to implement rent control, just cause eviction protections, stronger condominium conversion and foreclosure protections, anti-displacement zones, and options to help tenants manage the upfront costs of leasing an apartment?

YES. I do not agree with reinstating rent control. I agree with everything else.

7. **Tenant Opportunity to Purchase.** Would you support providing tenants of small, medium, and large multifamily properties with right of first refusal when the owner plans to put a building on the market, provided that they can make a bona fide offer to match the asking price in a reasonable period of time?

YES.

8. **Right to Counsel.** Would you support legislation to provide legal representation for low-income tenants in eviction proceedings?

YES.

9. **Eviction Sealing.** Eviction records create lasting stigma, are prone to error and impair access to stable housing. Would you support legislation to seal eviction records so that both tenants and landlords can move on with their lives?

YES.

10. **Zoning Reform—Part I.** Throughout Massachusetts, restrictive and exclusionary zoning laws make communities unaffordable and exacerbate residential segregation. Would you support the following steps....?

- a. **Prohibiting municipal and state zoning bylaws, ordinances, and land use decisions that discriminate based on race, socioeconomic status, or familial status?**

YES.

b. Enabling municipalities to pass inclusionary zoning ordinances by a simple majority vote?

YES.

c. Enabling municipalities to pass zoning ordinances to eliminate parking requirements for multifamily residential development by a simple majority vote?

YES.

11. **Zoning Reform—Part II.** The Department of Housing & Community Development recently released guidelines for the 175 MBTA communities to have a zoning ordinance or bylaw that provides for at least one district of reasonable size near public transit in which multifamily housing is permitted as of right. Would you support extending this requirement to include *all* municipalities that have public transit available, as opposed to only MBTA communities?

YES.

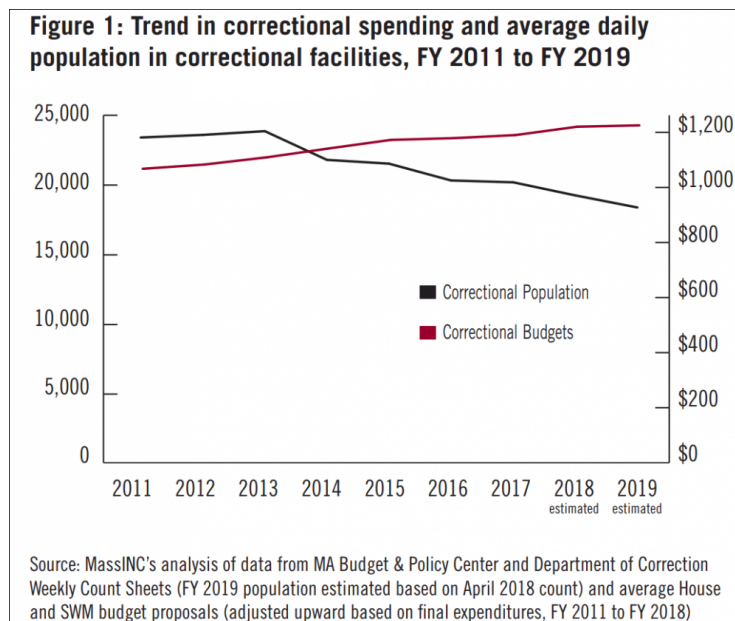
F. Racial and Social Justice

Massachusetts must continue to strive to be a state that welcomes and embraces all of its residents and combats prejudice and discrimination of all kinds, especially on the systemic and institutional level.

Mass incarceration in Massachusetts has proven socially and economically destructive, breaking apart communities across the state. From 2011 to 2016, [spending on prisons](#) grew faster than any other part of the Massachusetts budget, while funding for necessary services languished. The average cost per year to house an individual in the Massachusetts Department of Corrections is [more than \\$60,000](#), money that could be better reinvested into the communities that have suffered from decades of misguided and racially discriminatory “tough on crime” policies. To achieve “justice for all,” we need a judicial system that does not disproportionately target communities of color and the poor and that does not criminalize public health issues such as addiction.

Immigrants make up 16% of Massachusetts’s population; however, demagoguery against, or indifference to, immigrant populations has historically been a mainstay of Massachusetts politics. Even though the administration in Washington has changed, we have seen a deportation agenda from both Democratic and Republican presidents, and it is important for states like Massachusetts to take leadership in protecting and advancing the rights of our immigrant communities and making clear that all are welcome.

The correctional population in Massachusetts has declined, yet the state continues to increase the Department of Corrections budget.



Significant racial disparities exist in incarceration in Massachusetts.

Imprisonment by Race/Ethnicity (2019)	
White imprisonment rate (per 100,000)	63
Black imprisonment rate (per 100,000)	466
Hispanic imprisonment rate (per 100,000)	260
Racial/Ethnic Disparity in Imprisonment (2019)	
Black : white ratio	7.4
Hispanic : white ratio	4.1
Juveniles in Custody (2015)	
Total juveniles in custody	309
Committed	168
Detained	135
Diverted	0
Juvenile custody rate (per 100,000)	0
White custody rate (per 100,000)	18
Black custody rate (per 100,000)	166
Latino custody rate (per 100,000)	117
American Indian custody rate (per 100,000)	0
Asian custody rate	0

1. **Please explain your principles and proposals relative to this issue, and what work you personally have done to advance them (legislation, community work, published writings, etc.).**

In addition to the tax policies stated above, I support H.2851 An Act to Strengthen the foundation of the Commonwealth. I support H.582, a bill that supports native students. I want to provide more funding for technical and opportunity grants for entrepreneurs to help them with their business startup costs. I am in full support of H.2418 Safe Communities Act. In addition, I support the recently passed Workforce and Family Mobility Act. I also would like to pass and support legislation to create an easier pathway to citizenship for good standing MA residents, and I would work with federal legislators on policy solutions for this end.

2. **Police Accountability.** The 2020 police accountability legislation passed by the Massachusetts Legislature contained a number of steps forward, but important measures were left out. Would you support legislation to do the following?

a. **Eliminating qualified immunity for state and local police and correctional officers so that individuals whose constitutional rights are violated can have their fair day in court?**

YES.

b. **Supporting strict regulations on government use of face surveillance like those initially enacted by the House and Senate in 2020, before Governor Baker rejected them?**

YES.

c. **Requiring a vote by a local legislative body (city council, town meeting) before a municipality can acquire military or surveillance equipment?**

YES.

3. **Alternative Crisis Response.** Do you support creating a grant program through the Executive Office of Health and Human Services to increase funding for non-law-enforcement, unarmed community-based response personnel to respond to emergency calls?

YES.

4. **Sentencing Reform.** The 2018 criminal justice reform bill was an important first step in reducing mass incarceration. However, in our "liberal" state, incarceration rates remain much higher than they are in other countries, and sentencing laws can be even more punitive than those in states viewed as conservative. Do you support the following reforms?

a. **Eliminating mandatory minimums for all drug offenses?**

YES.

- b. **Raising the age of criminal majority from 18 to 21, in line with research that shows that young offenders served by a juvenile system are much less likely to reoffend and more likely to successfully transition to adulthood?**

NO.

- c. **Decriminalizing consensual sexual activity between adolescents, by creating an exception to the statutory rape law for youth [close in age](#)?**

YES.

- d. **Eliminating the sentence of life without parole, which is costly and has been shown to be racist in its application?**

NO..

5. **Prison Accountability.** Massachusetts legislators have the statutory right to make unannounced visits to correctional facilities run by the state. Would you commit to exercising this right in order to improve accountability for the Department of Corrections?

YES.

6. **Solitary Confinement.** Although the 2018 Criminal Justice Reform Act contained provisions to reduce the excessive and harmful use of solitary confinement, the Department of Corrections has established policies and practices to [evade implementation of the spirit of these reforms](#). Would you support legislation to address this discrepancy by taking [measures](#) such as (but not limited to) providing all incarcerated people with access to at least 1 hour of structured programming each day for 5 days a week, and offering a minimum of 50 minutes of therapy per week to everyone in segregated confinement by qualified clinical mental health providers; and requiring that all people held in solitary confinement be given a minimum of 4 hours out of cell time?

YES.

7. **Prison Visitation.** Maintaining connections with friends and family outside prisons is one of the most important factors in ensuring successful reentry. In March 2018, the DOC severely limited the ability of prisoners to receive visits and the rights of family and friends to visit their loved ones in prison. ([Read more on this here.](#)) Would you support legislation to end these restrictions?

YES.

8. **Prison Profiteering—Part I.** While Massachusetts does not have private prisons, the DOC invites private companies to profit off the families of incarcerated individuals by price gouging, as incarcerated individuals have no alternatives but to buy from the sole providers of goods in prisons. Would you support ending such price gouging by the DOC for necessary items and requiring DOC to adequately supply incarcerated individuals with the basic requirements necessary for life and maintain good health and hygiene?

YES.

9. **Prison Profiteering—Part II.** The cost of phone calls can be as high as \$4-\$5 (or more) for 15 minutes of phone time for incarcerated individuals in some parts of Massachusetts. Do you support making phone calls free for incarcerated individuals?

YES.

10. **Prison Moratorium.** Would you support a moratorium on the construction of new prisons and jails in the Commonwealth?

YES.

11. **Expungement.** Would you support legislation to automatically expunge marijuana offenses with state-level coordination, firm deadlines, and a study on the impact of the expungements?

YES.

12. **Safe Communities Act.** Do you support the Safe Communities Act, which limits local and state police collaboration with federal immigration agents, bars law enforcement and court personnel from inquiring about immigration status, and ensures due process protections?

YES.

13. **Work and Family Mobility Act.** Do you support removing immigration status as a barrier to applying for a license or learner's permit?

YES.

14. **Data Equity.** Do you support allowing state agencies to collect, organize, and assemble public data on major ethnic subgroups for all racial groups to create more visibility for the diverse experiences within communities and enable policymakers and community organizations to be more responsive to community needs?

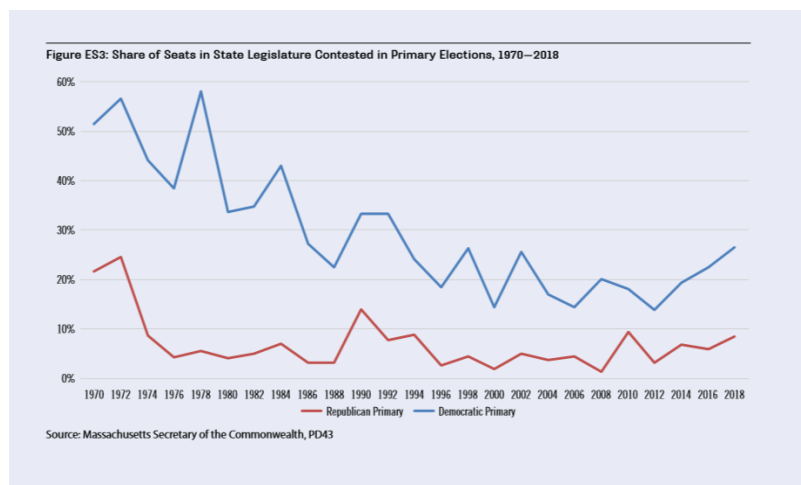
YES.

G. Good Government and Strong Democracy

A strong democracy depends on a transparent and representative government and an engaged public. Too often, however, we see centralized, unaccountable power and barriers to participation. An undemocratic, centralized power structure on Beacon Hill makes it easier for lobbyists to target the top and undermine the system. Despite recent reforms, a weak public records system stymies government accountability: MA is one of only two states where all three branches of state government claim to be exempt. A strong democracy requires an engaged electorate, but voter turnout in midterm elections, and especially local elections, remains low. Although election modernization legislation in 2014 and 2018 helped bring much-needed reforms, we still lag behind states in New England and around the country in making voting accessible (Maine, for instance, has allowed for Election Day Registration since the 1970s).

A centralized power system, a skewed campaign finance system, and restrictive voting laws together help create a situation in which our elections are the [least competitive in the country](#).

Our elections have grown less competitive over the past four decades.



Lower-income, ethnically diverse municipalities have lower voter turnout than whiter, more affluent communities, leading to reduced voice in state politics.

<u>Municipality</u>	<u>Turnout (Nov 2020)</u>
Springfield	52.67%
Lawrence	52.72%
New Bedford	55.27%
Chelsea	56.94%
Holyoke	58.89%
Lowell	59.71%
Fall River	60.04%
Southbridge	60.44%
Brockton	63.86%
Lynn	64.07%

Bottom 10 municipalities in terms of 2020 voter turnout

1. **Please explain your principles and proposals relative to this issue, and what work you personally have done to advance them (legislation, community work, published writings, etc.).**

I support election reform and democracy reform policy to create more democratic, robust, and equitable elections. I support permanent expanded vote by mail programs with prepaid postage, same day voter registration, expansion to early voting weekends. I also support ranked choice voting reform for state and federal elections. I also support granting voting rights for incarcerated people, and to allow them to choose their hometown as residence for voting and for municipal census. I want to propose legislation to create term limits for state representatives and senators, as well as for governor. I also believe house committee chairs should have term limits, house speaker should be voted by secret ballot, and all committee and full session votes be published and made public. Furthermore, I want comprehensive campaign finance reform to limit the amount of PAC and corporate interest to influence elections.

2. **Legislative Transparency—Part I**. The Massachusetts Legislature lacks many basic transparency measures found in other state legislatures around the country. Would you vote in favor of making the following items available online...?
 - a. **All committee votes, whether taken by electronic poll or formal roll call?**
YES.
 - b. **All written testimony submitted for or against bills (with appropriate redactions)?**
YES.
 - c. **Reader-friendly summaries of bills currently in or reported out of committee?**

YES.

3. **Legislative Transparency—Part II.** Legislators only vote to change the rules at the start of the legislative session, but all legislators can model transparency on their own throughout the session. Would you commit to doing the following...?

- a. **Standing for a recorded vote when a colleague asks for one on any amendment which you have co-sponsored?**

YES.

- b. **Making your committee votes available online on your website?**

YES.

4. **Public Records Law.** Massachusetts is the only state where the Governor's Office, the Legislature, and the Judiciary claim full exemptions from the public records laws. Would you support eliminating these exemptions?

YES.

5. **Expanding Access to Public Meetings.** During the pandemic, the ability to attend and participate in public meetings virtually has expanded the number of people who are able to participate, removing barriers faced by people with disabilities, people with small children, people with mobility issues, or people with scheduling conflicts (among many others).

- a. **Would you support updating Open Meeting Law so that people can choose to participate remotely in public meetings on a permanent basis, even after the pandemic emergency ends, and providing the necessary funds to municipalities to implement this?**

YES.

- b. **Would you advocate for continuing the practice of allowing people to testify virtually at legislative hearings?**

YES.

6. **Removing Barriers to Running.** The cost of child care can prove prohibitive to parents seeking to run for office. Would you support legislation to explicitly allow parents running for office to use campaign funds to pay for child care?

YES.

7. **Same Day Registration.** Massachusetts lags behind other states in making voting accessible for all. Do you support eliminating Massachusetts's arbitrary and exclusionary 20-day voter registration cutoff and allowing voters to register or update their registration at the polls on Election Day and during the early voting period?

YES.

8. **Local Elections.** Municipalities across Massachusetts have sought to expand the franchise for local elections, but remain hamstrung by the home rule process.

- a. **Would you support legislation to enable municipalities to expand the franchise to 16- and 17-year-olds for local elections?**

YES.

- b. **Would you support legislation to enable municipalities to expand the franchise to legal non-citizens (e.g., Green Card holders) for local elections?**

NO.

9. **Voting Rights Restoration.** Would you support restoring the franchise to incarcerated individuals serving time for felony convictions (Their right to vote was taken away by ballot twenty years ago)?

YES.

10. **Redistricting.** Would you support legislation to codify the goal of creating [influence districts, crossover districts, and coalition districts](#) in order to expand opportunities for representation and voice for communities of color?

NO.

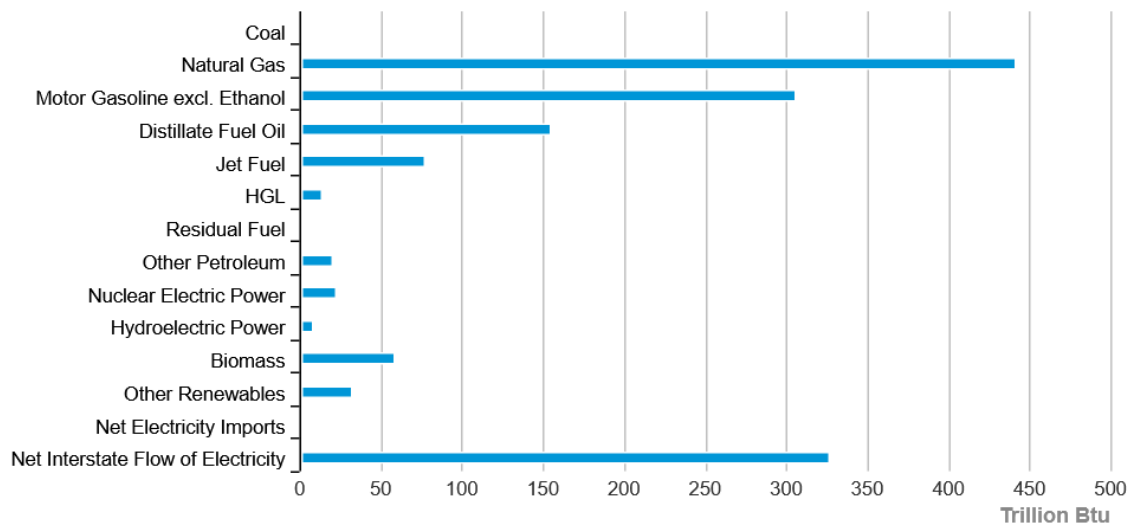
H. Sustainable Infrastructure and Environmental Protection

As a coastal state, Massachusetts will be hit particularly hard by climate change, but we are not responding with the necessary urgency. In order to avoid catastrophic climate change, global carbon emissions need to be [halved by 2030](#) and brought to net zero by 2050, and affluent countries and states must go further. In 2016, the Massachusetts Supreme Judicial Court ruled that the state has failed to meet its legal obligation to set and enforce annual limits on greenhouse gas emissions as outlined in the 2008 Global Warming Solutions Act. Setting and reaching these goals, as well as the goals of the 2021 Next Generation Roadmap law, will require the decarbonization of our state economy and a transition away from fossil fuels toward clean, renewable sources of energy. In light of congressional gridlock at the federal level, state government must take a role in accelerating this transition and ensuring that equity is at the forefront.

Public transit must play a role in decarbonizing our transportation system, as well as advancing complementary goals of equity and inclusion. However, Massachusetts politicians have lost their understanding of public transit as a public good that benefits all residents and businesses in Massachusetts, not just those who use it in their daily lives. The greatest evidence of this is their neglect of the MBTA: its debt has grown to nearly [\\$5 billion](#), and it would need [more than \\$10 billion](#) to bring infrastructure and equipment up to a state of good repair. Regional Transit Authorities that serve communities, including Gateway Cities across the state, face enormous capital needs as well.

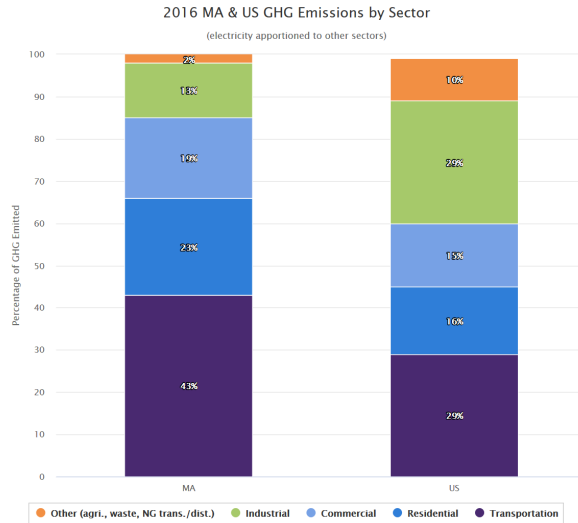
Despite recent progress, Massachusetts is still overwhelmingly dependent on fossil fuels.

Massachusetts Energy Consumption Estimates, 2019



Source: Energy Information Administration, State Energy Data System

Transportation is currently the largest contributor to greenhouse gas emissions in MA.



1. Please explain your principles and proposals relative to this issue, and what work you personally have done to advance them (legislation, community work, published writings, etc.).

Currently, the state generates upwards of 66% of our electrical energy from imported natural gas sources. Virtually the rest of our electrical energy comes from renewable and green sources, especially solar, biomass, and hydroelectric power generation. To reach our climate goals, and to get to 100% green energy, we must invest heavily into renewable technologies and act to ween off those natural gas imports. To this end, I want to work with renewable energy producers to develop new wind and solar projects for the state, which I would help to secure funding for in the capital budget plan. I support the new offshore wind farm projects off the Cape, secured by An Act to Advance Clean Energy, and The Act to Promote Energy Diversity. I would like to create similar plans for individual solar power generation and large PV solar parks.

In addition to maximizing our capabilities in wind and solar energy, I believe that a key component of reaching our climate goals is to reinvest in a nuclear power plant. Massachusetts made a mistake when it let the Pilgrim Power Plant close. I want to explore the potential to either recommission and modernize the Pilgrim Power Plant or to develop and create an entirely new nuclear power plant site in partnership with neighboring states. Nuclear energy production in the state would add more in-state produced electricity to the grid, reducing our heavy reliance on natural gas imports, and promoting energy security for the Commonwealth.

When it comes to fixing the MBTA budget problems, we have to dramatically find and fund new revenue sources. Some ideas would be to secure more funding from the federal government, to increase the assessments collected from the municipalities connected to the MBTA, implementing a City of Boston additional

sales tax of 1% to contribute to the MBTA budget, implementing a real estate tax on properties in proximity to MBTA service, securing funds through the Fair Share Amendment. If the MBTA is not able to secure funding and create a balanced budget soon, they will have to dramatically cut service to their commuter rail and bus programs. This would have a devastating impact on our communities and people who rely on the MBTA every day.

2. **Next Generation Roadmap.** At the start of this legislative session, the Legislature passed a bill that requires emissions reductions of 50% from 1990 levels by 2030, 75% by 2040, and at least 85% by 2050. How can the Commonwealth exceed these targets, and what will your priorities be in advocating for that?

We can exceed these targets by producing more electrical energy here in MA. We must maximize our capabilities in wind, solar, and hydroelectric power. We must stop relying on massive quantities of natural gas imports which are then burned to create electricity in power plants here in state. We must support increased modernization to our MBTA and other regional transit agencies to electrify buses and commuter rail service. We must continue to modernize our houses and new construction with retrofitting and should no longer allow commercial or residential properties from generating their energy from oil or natural gas power. We must also incentivize the consumer switch away from combustion engine motor vehicles to instead use hybrid or fully electric powered vehicles.

3. **100% Renewable Energy.** Scientists have argued that, with existing technologies, the US could supply 100% of energy needs with renewable sources. Would you support requiring that Massachusetts adopt a target of sourcing electricity from 100% renewable energy sources by 2030?

YES.

4. **Rooftop Solar.** Would you support requiring that all new construction be built to accommodate solar energy installations?

YES.

5. **Fossil-Fuel-Free Construction.** Would you support legislation to enable municipalities to ban oil and gas heating pipes in new construction?

YES.

6. **Fossil Fuel Infrastructure.** Do you oppose the expansion of fossil fuel infrastructure in the state?

YES.

7. **Environmental Justice.** Would you support requiring the Energy Facilities Siting Board to consider environmental justice, public health, and climate impacts in decision-making on siting projects?

YES.

8. **Just Transition.** Do you support the creation of a Just Transition Office to assist workers that are displaced in the transition from fossil fuels to clean energy?

YES.

9. **Electrifying Public Transit.** In Massachusetts, 43 percent of GHG emissions in 2016 came from transportation infrastructure and vehicles. Tackling this will require a shift away from cars and toward public transit, as well as electrification of both. Would you support the electrification of the MBTA bus fleet by 2030, RTA fleets by 2035, and the MBTA rail system by 2035?

YES.

10. **Free Public Transit.** Do you support making public transit in the Commonwealth fare-free?

NO.

11. **Regional Transportation Funding.** The unavailability of state funds for infrastructure spending has meant the deterioration of regional transportation systems. Do you support allowing municipalities to place a question on the ballot to raise revenue for local and regional transportation projects?

YES.

III. ADDITIONAL COMMENTS

Use this space to add any other issues important to your vision for Massachusetts or any other matter you think progressive voters should know about your candidacy.

I am a pro-labor and anti-corruption candidate. My central policy priorities surround fighting climate change and energy policy, affordable housing, and quality of life policies in education, family care, healthcare, and progressive tax and budget reform. I want to secure a better future for all people, and want to create a more just, equal, and resilient Commonwealth. The core of my campaign is about including and encompassing all voices in the district. I want to provide a voting option to people who feel they have no voice in our current system. I do not favor one group over another, with the aim to provide real policy solutions that will ultimately benefit everybody, regardless of political identity. I plan to be a true representative, beholden to the will and command of all people in the district.