



PROGRESSIVE MASSACHUSETTS
2022 Legislative
ENDORSEMENT QUESTIONNAIRE

Candidate: Terri Tauro

Office Sought: State Representative

District: 8th Essex

Party: Democratic Party

Website: www.territauro.com

Twitter: [@TerriTauro4Mass](https://twitter.com/TerriTauro4Mass)

Facebook: [TERRI TAURO for Mass](https://www.facebook.com/TERRI_TAURO_for_Mass)

Instagram: [@territauro4mass](https://www.instagram.com/territauro4mass)

OVERVIEW

We view our questionnaire as an educational resource, for both candidates and voters, on progressive approaches to the issues. It provides candidates the opportunity to address a number of important issues beyond the surface talking points and provides progressive voters an extremely valuable resource when making a decision.

Our Questionnaire starts with an “About You” section and ends with an opportunity for you to include additional remarks beyond what we asked.

The bulk of our questionnaire is focused on the issues outlined in our [Progressive Platform](#), which also inform our [Legislative Agenda](#). We are interested in your overall philosophy as well as your views on specific policy and legislation.

Each section features charts or graphs (with links to sources) that illustrate one or more facets of the issue under discussion.

*Each section contains open-ended questions and YES/NO questions. **If the question is a YES/NO question, please answer either YES or NO.** Feel free to expand your answers, but **please keep answers < 150 words.***

Issue Subsections:

- A. Revenue and Taxation
- B. Jobs and the Economy
- C. Education
- D. Health Care
- E. Housing
- F. Racial and Social Justice
- G. Good Government and Strong Democracy
- H. Sustainable Infrastructure and Environmental Protection

I. About You & Your Governing Approach

1. Why are you running for office? And what would be your top 3 priorities if elected?

Women with my background are not the typical candidate for office. A single mother of two raised in public housing is not the poster child of politics. I want to show my two daughters and every person that was raised in public housing that our leadership can truly reflect us, that we can do whatever we set our mind to. With everything going on in the world, I feel the need to use my skill set and unique perspective to make a difference.

My top three legislative priorities are:

- 1- Fully funding our schools
- 2- Transitioning to renewable energy while bringing workers along
- 3- Transparency in government

2. What prepares you to serve in this capacity?

I am ready to serve my community as State Representative because I have already been doing the job. As president of IUE-CWA 81776, for many years, I have represented my union brothers and sisters. I led hours-long contract negotiations that yielded the strongest benefits 81776 workers have seen in decades and came out on top in every grievance battle and complaint I have filed all the way to the MA Department of Labor Relations. My union members are my constituents and I give 100% night and day to take care of them. I will do the same as a State Rep.

3. What do you view as the biggest obstacles to passing progressive policy at the state level, and how do you plan to overcome these obstacles?

A lack of transparency in the legislature has killed far too many pieces of legislation that the public both wants and needs. When it comes time to vote for a bill in committee or for the Speaker, Representatives continue to hide behind anonymity. To be able to pass real progressive policies that challenge those in power, we need to be able to hold our elected officials accountable. We can not do so with secret votes, that is why I will stand with current progressive State Reps in advocating for public votes.

4. What is one policy pioneered by another state that you would like to see Massachusetts adopt?

This is not a grand policy, but it is an important one that deserves to be worked on. Being the department Administrator to the Harbormaster, we have been working hard to make sure our waters are as clean as possible. I have also been working with our online booking agent (Dockwa) to get MA to commit to a "Clean Vessel" rating for marinas in Massachusetts as in Maryland and Florida. Visiting boaters would be able to see which marinas have environmentally responsible practices before deciding where they will stay

throughout their trip. Fighting for the health of our planet is a two front approach, it is pushing for grand legislation that will take years to decades to pass while also implementing smaller scale policies like the Clean Vessel rating that will directly lead to a greener environment.

5. Provide an example of a time that you built a broad coalition to achieve a desired policy outcome.

In my first year as union president, I realized right away that the four town workers unions (municipal, police, fire, and teachers) contracts are all negotiated in the same year. I knew the best way to put pressure on the town was to get us all on the same page. I set up a series of presidents meetings and we formed a strong coalition. We conducted a joint audit of the town's finances and agreed on sticking points. The last contracts have been the best in decades and it is due to the strong presidents that stuck together.

6. (For incumbents only) Each year, Progressive Massachusetts compiles a scorecard of key roll call votes, available at <https://scorecard.progressivemass.com>. Please use this space to explain any discrepancies between your votes and the progressive position.

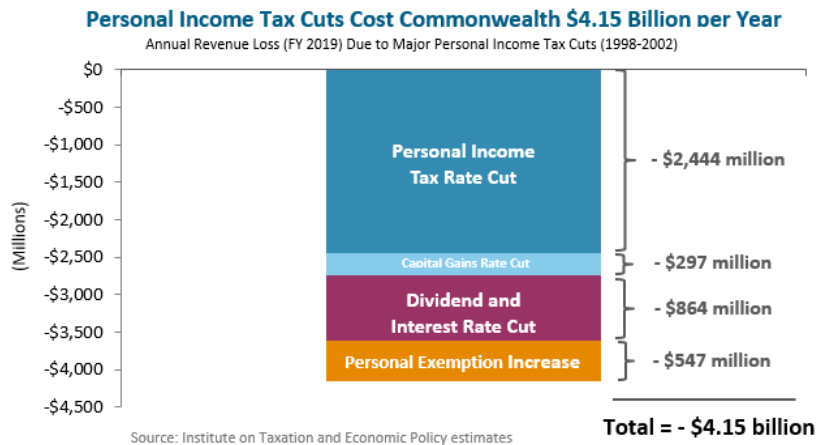
N/A

II. The Issues

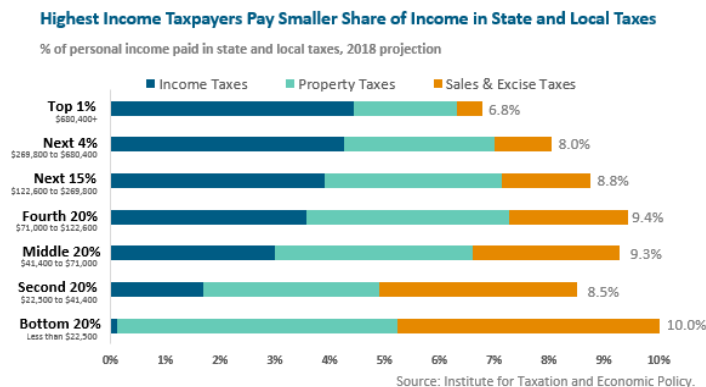
A. Revenue and Taxation

Between 1977 and 2016, Massachusetts [reduced state taxes](#) by more than all but two other states. Because of income tax cuts enacted between 1998 and 2002, Massachusetts loses over \$4 billion in tax revenue *each year*—\$4 billion that is not invested in our roads, bridges, schools, parks, and services, all of which have historically been part of why MA is a great place to live. Such cuts to the state income tax, combined with [low corporate income taxes compared to other states](#), have meant increasing reliance on fees, as well as sales, gas, and property taxes, exacerbating the overall regressivity of the system. Regressive taxation strains low- and middle-income families, and reduced revenue collection curtails our ability to invest in vital infrastructure. It also restricts legislators' ability—and willingness—to pass new and visionary legislation, as there is a continual shortage of funds for existing priorities.

Declining revenues have meant drastic cuts, limiting our ability to invest in our communities and future economic stability.



Massachusetts state and local taxes are regressive.



1. Please explain your principles and proposals relative to this issue, and what work you personally have done to advance them (legislation, community work, published writings, etc.).

It is clear to see that our wealthiest residents of Massachusetts are not paying their fair share. Too many of our elders are facing housing insecurity, working class people surviving paycheck to paycheck, and children & teachers forced into overcrowded classrooms. All this while data continues to show that the rich are getting richer.

First step, we need to pass the Fair Share Amendment, a slight tax increase on the wealthiest .6% of Massachusetts that would raise billions. Next, we must close tax loopholes and end these corporate tax breaks that let corporations treat our state like a playground. It is our publicly funded schools, infrastructure, and communities that make this state appealing for business, it's time they start putting in what they owe.

We must also recognize that many of our working class communities need tax relief. Our senior citizens deserve to continue living in the homes they raised their families in, that is why I support property tax relief for our elders. I also support expanding the earned income tax credit that leaves out too many working class people with families.

2. Corporate Tax Breaks. Corporate tax breaks cost Massachusetts [more than \\$1 billion in foregone revenue](#) each year. Companies can secure access to such tax breaks due to political connections whether or not the promised benefits ever materialize. Which of the following accountability steps would you support?

a. Collecting and publicly disclosing information about the benefits to the state from any tax break?

YES.

b. Repealing any tax break that does not provide the intended benefits in a cost-effective manner?

YES.

c. Establishing sunset dates for all tax breaks so that they must come up for periodic review?

YES.

3. Fair Share. Do you support the proposed constitutional amendment to increase the tax on annual income over \$1 million by 4%, with the resulting revenue devoted to public education and transportation needs (Fair Share Amendment)?

YES.

4. Progressive Revenue. The Fair Share Amendment ballot initiative will raise much-needed revenue for our commonwealth, but we will require more resources to

meet current needs. Do you support the following measures to make a more progressive tax code?

- a. **Raising the corporate minimum tax for larger companies? (The corporate minimum tax is currently only \$456.)**

YES.

- b. **Imposing a tax on the portion of corporations' US profits that are shifted to offshore tax havens?**

YES.

- c. **Raising the corporate tax rate from 8% to 9.5% (where it stood in 2009)?**

YES.

- d. **Raising the tax on long-term capital gains from 5% to 8.95%, in line with states like New York and Vermont?**

YES. For capital gains, I would like to see an exception for seniors selling family homes.

- e. **Levying a modest tax on university endowments greater than \$1 billion?**

YES.

- 5. **PILOT Reform.** Massachusetts is home to some of the world's most prestigious cultural, educational, and medical institutions, but many of them are exempt from property taxes.

- a. **Do you support enabling cities and towns to require large tax-exempt not-for-profit institutions (i.e., with property valued at or above \$15 million) to make payments in lieu of taxes to the municipality equal to 25 percent of the amount that would be paid if they were not exempt?**

YES.

- b. **Would you support requiring the Department of Revenue to regularly collect the data on the financial impact of lost tax revenue from tax-exempt institutions?**

YES.

- 6. **Public Bank.** Do you support the creation of a Massachusetts [public bank](#) that would make loans to small businesses, local farmers, cooperatives, community development financial institutions, community development corporations, and municipalities?

YES.

7. **Divestment.** Do you support divesting public investments from private prisons, fossil fuel companies, and weapons manufacturers?

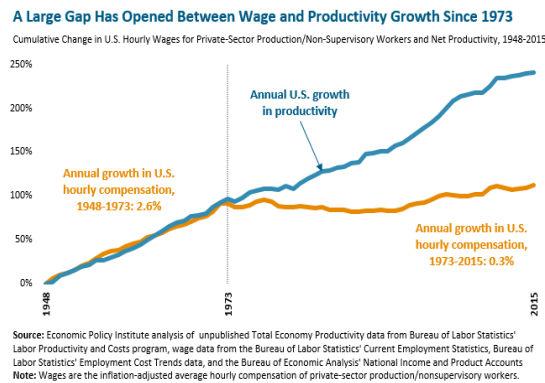
YES.

B. Jobs and the Economy

Massachusetts ranks as one of the top ten [most unequal states](#), as the gains from economic growth have disproportionately benefited the already well-off. Compounding this, we are one of the most expensive states in the country for [health care](#), [housing](#), and [child care](#), all of which strain wages. A strong economy depends on strong wages, as workers spend and help local economies thrive. Although the recently passed minimum wage increase will eventually lift the minimum wage to \$15 per hour, this is [still not a living wage](#) for many.

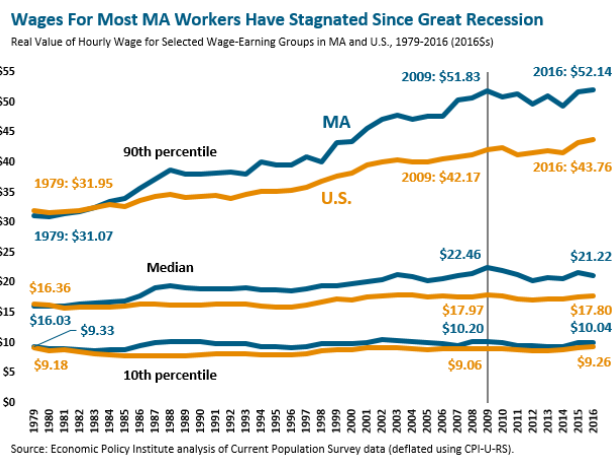
In recent decades, unions have been under attack. However, unions played—and continue to play—a pivotal role in creating a strong middle class. With weaker unions (or no unions at all) come weaker social and economic rights and an imbalanced economy.

Productivity has grown significantly since the 1970s, but it is not being reflected in higher wages.



<https://archive.massbudget.org/reports/swma/>

Wages for most MA workers have remained stagnant since the Great Recession.



<https://archive.massbudget.org/reports/swma/wages-income.php>

1. **Please explain your principles and proposals relative to this issue, and what work you personally have done to advance them (legislation, community work, published writings, etc.)**

I am President of IUE-CWA local 81776 and sit on the Executive Board of the North Shore Labor Council (NSLC). I have been invited to speak at the national IUE-CWA women's committee meeting in DC on June 14th. You would be hard-pressed to find a candidate in the 8th Essex or perhaps across the state to find a more committed union supporter..

I have consistently advocated for health, safety, and equity in the workplace. I have formed coalitions of unions within my own town as well as through the NSLC. I have negotiated 3 of the most successful contracts in decades. If there is a union action within 20 miles, I am on that line. I will continue to support legislation that codifies the right to organize, safe work environments, and pay equity. I will support wage theft ordinances as well as ballot initiatives like Gig and Fair Share.

2. **One Fair Wage**. Do you support eliminating the subminimum wage for tipped workers?

NO. As a former server and bartender of 30 years and also a labor leader, I see both sides to this issue. I am afraid that imposing a higher wage for tipped employees will hurt the Ma and Pa operations. I also believe that if a server is making less in tips they should have a higher wage. I would like to see a sliding scale if possible.

3. **Wage Theft**. Do you support holding businesses responsible for the wage violations of their subcontractors when the work they do is substantially connected to the company's operations?

YES.

4. **Wage Transparency**. Would you support requiring the submission of wage data to a public database maintained by the Executive Office of Labor and Workforce Development and broken down by gender and race?

YES.

5. **Fair Scheduling**. Many workers in the service sector face irregular working hours, making it difficult to plan for other life events. Do you support providing workers the right to 14 days advance notice of hours and the right to request specific hours without retaliation from the employer?

YES.

6. **Mandatory Arbitration**. Would you support legislation to prohibit the use of mandatory arbitration provisions in employment contracts, i.e., requirements that an employee forfeit the right to sue the employer for discrimination, nonpayment of wages, or other illegal conduct?

YES.

7. **Paid Vacation Time**. The US is the only advanced industrial country to not guarantee workers paid vacation time to use as they wish. Would you support making Massachusetts the first state to require employers to provide paid vacation time to their workers?

YES.

8. **Paid Leave for Municipal Workers**. In 2018, MA passed the strongest paid family and medical leave law in the country. However, the law did not include municipal workers. Would you support extending the law to make sure that municipal workers have access to these vital benefits?

YES.

9. **Gig Economy**. More than 200,000 workers in Massachusetts now work in the “gig economy,” with the rise of app-based platforms. However, their employers often seek to evade labor law in order to avoid treating them as employees and provide decent pay and benefits.

- a. **Do you oppose the November 2022 ballot initiative backed by Uber and Lyft to rewrite current state labor law to exclude hundreds of thousands of workers from fundamental rights and protections?**

YES.

- b. **Will you oppose all legislation that weakens Massachusetts’s labor law protecting employees from being misclassified as “independent contractors”?**

YES.

10. **Worker Ownership**. Do you support allocating state funding (grants, loan guarantees, technical assistance funds) to support worker-owned and governed businesses and cooperatives in Massachusetts?

YES.

11. **Worker Governance**. Would you support incentives and/or requirements for large MA corporations to allow workers to elect at least some members of the board?

YES.

12. **State House as a Workplace**. Although the Legislature voted in 2017 to increase legislators’ pay, the Legislature has not taken necessary steps to ensure staff are being properly compensated. Staff are often overworked and underpaid, leading to burnout and making it difficult for the State House to retain diverse talent.

- a. **Do you support the unionization effort of the Massachusetts State House Employee Union?**

YES.

- b. **If elected, are you committed to creating a safe work environment for all of your employees in which harassment, especially sexual harassment, is not tolerated?**

YES.

- c. **Do you support the creation of an independent commission to investigate and report on complaints of workplace and sexual harassment in the Massachusetts Legislature?**

YES.

C. Education

Public education plays a fundamental role in democracy, cultivating informed, well-rounded community members and providing the knowledge and skills needed for economic mobility and opportunity. Although our public education system gets high marks overall, it remains one of the [most unequal](#) in the country, with significant opportunity and resource divides based on income and race. In 2019, Massachusetts passed the Student Opportunity Act to update the formula for state aid to public school districts and correct these inequities, but schools have faced added strains due to pandemic.

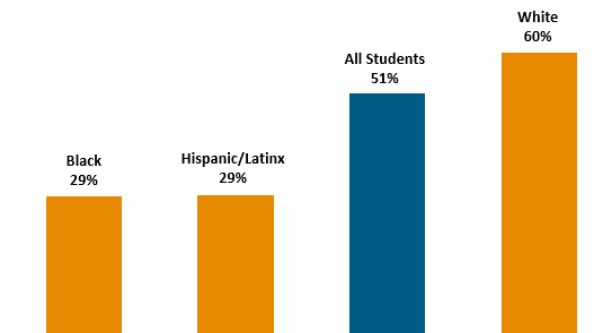
Public education has also been under attack by powerful corporate interests seeking to undermine public schools, teachers, and unions. These groups invest millions of dollars to promote the expansion of privately run charter schools, which siphon money from our public K-12 districts while largely excluding students with the greatest needs. Costly, mandated standardized test results are used to label schools as “failing” and justify these privatization schemes. State receiverships in struggling school districts take power away from communities and often facilitate privatization schemes that could never achieve democratic support.

At the same time, our understanding of education has also broadened. No longer do we only talk about K-12 education; rather, most of the [fastest-growing occupations](#) require education beyond a high school diploma. Massachusetts has been disinvesting from public higher education for the past two decades, leading to higher tuition costs and putting students at risk of long-term debt (if they are even still able to attend). Our public colleges and opportunities are an economic engine for local economies as well as a pathway to economic opportunity, and when that opportunity is cut off for students, we all lose out.

Massachusetts has significant achievement gaps reflective of resource gaps.

Massachusetts Has Significant Achievement Gaps for Youth of Color in 4th Grade Reading

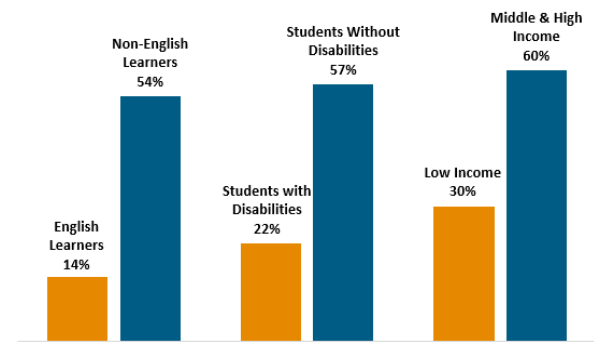
Share of MA 4th Graders Proficient on the 2017 NAEP Reading Exam, by Student Race, all students



Source: National Center for Education Statistics, 2017

Massachusetts Has Significant Achievement Gaps for Disadvantaged Youth in 4th Grade Reading

Share of Mass. 4th Graders Proficient on the 2017 NAEP Reading Exam, by Student Category



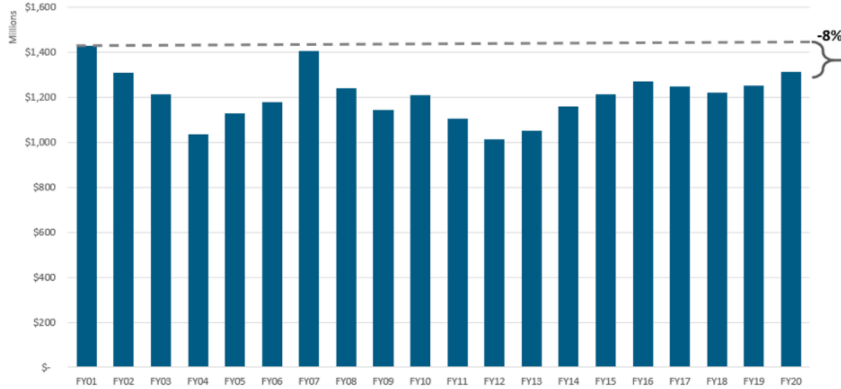
Source: National Center for Education Statistics, 2017

https://archive.massbudget.org/report_window.php?loc=Towards-Equity-School-Funding-Reform-in-Massachusetts.html

Massachusetts has been disinvesting from higher education and shifting the cost burden onto students.

Massachusetts Has Cut Spending on Higher Ed. by 8 Percent Since FY 2001

State spending on higher education, FY 2001-2020 adjusted to inflation (2020 \$)



Note: FY 2007 total is adjusted downwards to account for the fact that significant funding during this year was for capital investments that supported activity during other fiscal years.

1. **Please explain your principles and proposals relative to this issue, and what work you personally have done to advance them (legislation, community work, published writings, etc.).**

When it comes to our public schools, so many of the problems they face come back to one issue, a lack of funding. We need to fully fund our schools and make sure our tax payers' dollars are going to decreasing class sizes, increasing teachers' salaries, and retrofitting our schools, NOT into the pockets of administrative consultants.

As a proud product of public schools and mother of two public school students, education is a personal issue. I volunteered for many years teaching cookie baking (baking is one of my many talents) while my children were in school. I also continue to volunteer in the Marblehead school's Magic Hat Thrift shop. The shop donates \$200K per year to student activities and extracurriculars. From picket lines to resource drives, I have always stood by my educators. It is also why I am so proud to have the endorsement of AFT-Mass, the statewide public educators union.

2. **Early Education and Child Care.** Do you support the Common Start Coalition's proposal to establish a robust system of high-quality, affordable early education and care for children from birth through age 5, as well as after- and out-of-school time for children ages 5-12, and for children with special needs through age 15?

YES.

3. **Standardized Testing.** Massachusetts is now one of just 10 states for which an assessment like the MCAS is a condition for graduation. Would you support ending this requirement and allow students, especially students with disabilities, to have several pathways to demonstrate that they have met required competency standards?

YES.

4. **Charter Schools.** In 2016, MA voters overwhelmingly rejected a ballot initiative to lift the cap on charter schools given the millions of dollars it would have siphoned away from public school districts.

- a. **Do you support keeping the cap on charter schools?**

YES.

- b. **Would you support legislation to bring greater accountability to charter schools by requiring them to adhere to the same disclosure and disciplinary standards and offer the same support for English Language Learners and students with disabilities as public school districts?**

YES.

5. **Receivership.** The Lawrence Public Schools, Holyoke Public Schools, and Southbridge Public Schools are currently under state receivership, with a state-appointed receiver assuming the powers of a superintendent or democratically elected school committee. The state takeover has not produced sustainable gains and has at times been characterized by [chronic mismanagement](#). Would you support ending the practice of state receivership and returning power to democratically elected school committees?

YES.

6. **Comprehensive Sex Education.** Do you support requiring public schools that teach sexual health education to provide age-appropriate, medically accurate information that is inclusive of all sexual orientations and gender identities and includes topics such as consent and the effective use of contraception?

YES.

7. **Anti-Racist Education.** Curricula that reflects students' lived experiences and actively engages them in antiracism is crucial for students today. Would you support legislation that incentivizes districts to develop Ethnic Studies programs?

YES.

8. **Higher Education Access.** Do you support granting in-state tuition and financial aid to undocumented students?

YES.

9. **Debt-Free College.** Do you support making tuition (and mandatory curriculum fees) free at public colleges and universities?

YES.

D. Health Care

Massachusetts has led the way in providing near universal health insurance coverage, with [97% of the state](#) having health insurance. But until that is 100%, we haven't reached truly universal coverage or tackled critical barriers to accessing care. Disparities in insurance coverage and health care access continue to exist along income, racial, and education lines. Premiums continue to rise, and high deductibles mean that many do not get the health care they need—or suffer from long-lasting debt if they do. We still spend an oversized portion of public and private money on health care, but without necessarily achieving better health outcomes. The pandemic has put a spotlight on these health care inequities and the need to invest in a stronger public health infrastructure and be more resilient for the pandemics and challenges of the future.

Massachusetts health insurance premiums have skyrocketed over the past two decades.

Massachusetts health insurance premiums have tripled in 19 years and consume an ever-larger portion of earnings for middle class families.

Average total cost for Massachusetts family health insurance premiums and national cost of a new compact car



The share of middle-class commercially-insured Massachusetts families with more than ¼ of total earnings going to health care rose from 28% in 2013-2015 to 33% in 2016-2018.

Notes: Data are in normal dollars of the year shown.

Sources: Family Health Insurance premiums are for Massachusetts from the Agency for Health Care Quality – Medical Expenditure Panel Survey, Insurance Component. Car cost information is based on car-specific inflation from the BLS and the compact car price index from Kelly Blue Book.

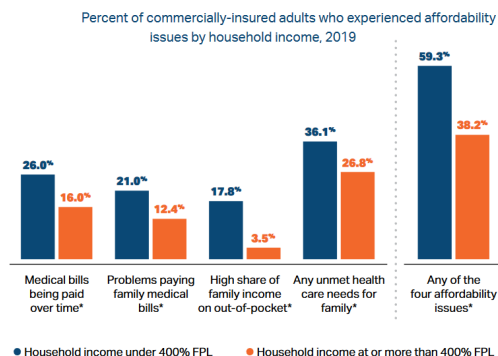
<https://www.prnewswire.com/news-releases/average-new-car-prices-up-nearly-4-percent-year-over-year-for-may-2019-according-to-kelley-blue-book-300860710.html>

Earnings calculation includes employer premium contribution in both health care payments and in earnings total. See Massachusetts HPC 2019 Annual Cost Trends Report (p. 15)



Image411

Many MA residents face difficulty paying health care bills.



- 1. Please explain your principles and proposals relative to this issue, and what work you personally have done to advance them (legislation, community work, published writings, etc.).**

Healthcare is a human right. Our healthcare system needs to put people over profits. No person should choose between living with pain or living with crushing medical debt. That is why I have fought tooth and nail for my union members to have the best healthcare possible, but it still is not enough. The residents of Massachusetts deserve a Medicare for All healthcare model that includes a transitional period that eases people into this system.

We must also make sure we are supporting our healthcare workers. From PCA's to nurses, our healthcare workers take care of our loved ones and keep our communities healthy. Even though we called them heroes during the pandemic, in Massachusetts they face unsafe working conditions and dismal pay. I am proud to fight for them on the executive board of the North Shore Labor Council (an affiliate of the AFL-CIO), and hope to continue that fight in the halls of the State House.

- 2. Single Payer.** Would you support legislation to enact a single payer health care system in Massachusetts, which would guarantee health insurance as a right?

YES.

3. **Whole-Person Health**. Would you support legislation adding oral health and dental services as a requirement of state standards for MassHealth and commercial Accountable Care Organizations (ACOs) and other value-based care models?

YES.

4. **Reproductive Justice—I**. Do you support requiring health insurance plans to cover all pregnancy care, including abortion care, prenatal care, childbirth, and postpartum care, without any kind of cost-sharing?

YES.

5. **Reproductive Justice—II**. Would you support the creation of an uncompensated care program to reimburse abortion providers for services they provide to individuals without other means of paying for care, including those individuals traveling from out of state who would have qualified for MassHealth if they lived in the state?

YES.

6. **Reproductive Justice—III**. Young people under sixteen seeking an abortion must obtain parental consent or judicial authorization. While most young people involve their parents, many cannot, causing delays to timely medical care and counseling. Scared teens may also turn to dangerous measures: going out of state or risking their lives and health with illegal or self-induced abortion. Would you support repealing this restriction on young people's access to abortion?

YES.

7. **Menstrual Equity**. Would you support providing access to free menstrual products in schools, shelters, and prisons?

YES.

8. **Harm Reduction**. An essential part of addressing the opioid crisis, safe consumption sites allow medical professionals to respond to overdoses and engage participants in medical and behavioral health services. Would you support the legalization of SCSs?

YES.

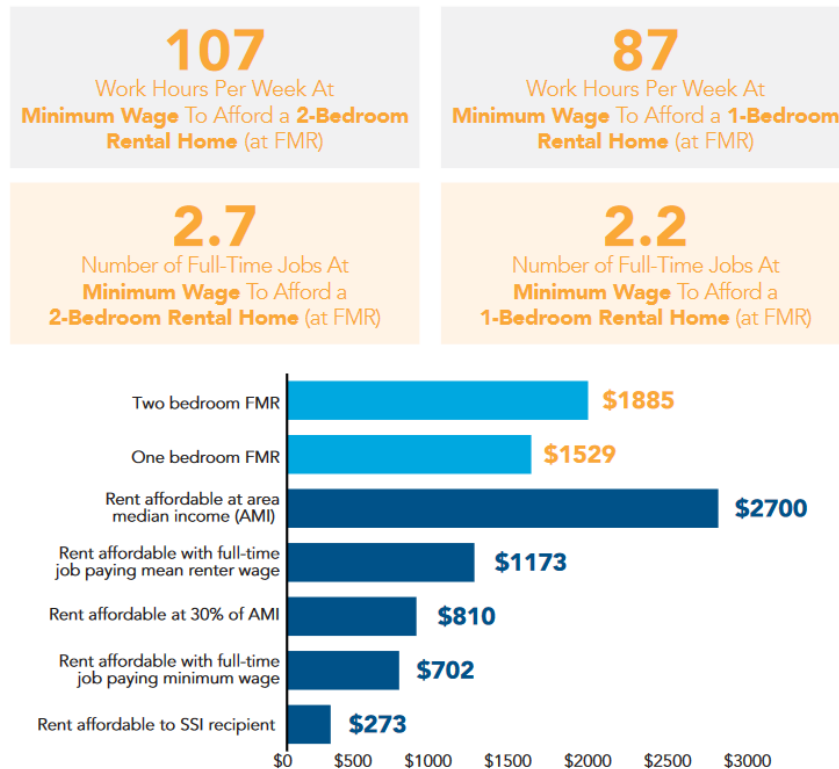
9. **Community Immunity Act**. Would you support strengthening the Commonwealth's immunization policies by standardizing the immunization requirements for all schools, daycare centers, and other covered programs and centralizing within the Department of Public Health (DPH) the processes for obtaining an exemption from those requirements?

YES.

E. Housing

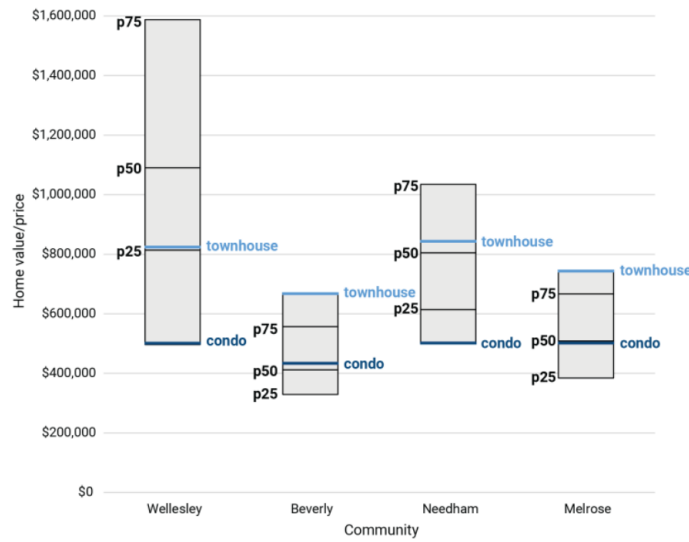
Massachusetts has a lot to offer, but that does little if people can't afford to live here. The [US News & World Report's annual state rankings](#) put Massachusetts at #40 in housing affordability (and #47 in cost of living). A worker earning minimum wage in Massachusetts would have to work [87 hours a week](#) to afford a modest one-bedroom rental home at market rate (and 107 hours for a modest two-bedroom). Over the last ten years, the need for affordable housing has increased, while funds for affordable housing have decreased at both federal and state levels. This is unsustainable. It has led to expanding economic inequality, increased homelessness, and damage to our economy, as talented workers often leave the state for less expensive regions.

With rental increases far outpacing wage increases, many are left with housing instability.



The overreliance of single-family housing in suburban development, as opposed to denser or multi-family housing, makes communities unaffordable.

Small multifamily condos expand affordability in the wealthiest communities
 Comparing prices of new townhouses and condos to existing homes



Source: Existing home values taken from the Census Bureau's American Community Survey 2014-2018. Prices for new townhouses and condos from Crump, Mattos, Schuetz and Schuster (2020). Metropolitan Policy Program at BROOKINGS

1. **Please explain your principles and proposals relative to this issue, and what work you personally have done to advance them (legislation, community work, published writings, etc.).**

Our state is facing an affordable housing crisis that is hurting poor, working, and middle class families. Too many of our neighbors are having to leave the communities they were raised in or raised their families in simply because it has become too expensive. Housing stability is crucial for a safe and interconnected community. We need to put real financial investment at the state level into affordable housing funds and public housing authorities. We also must revise our exclusionary zoning practices and establish a fee on real estate transfers to fund affordable housing projects.

I was raised in public housing and was able to own a beautiful home in Marblehead where I have raised my two daughters. That story is becoming almost impossible to recreate in Massachusetts. As State Representative, I want to fight to make sure all residents have the chance to live in a safe community they can afford.

2. **Homeless Bill of Rights.** Would you support the creation of a Homeless Bill of Rights that extends anti-discrimination protections to persons experiencing homelessness, including protections when seeking employment, housing, voter registration, and access to public spaces and places of public accommodation; and secures the right of persons experiencing homelessness to rest, seek shelter from the elements, occupy a legally parked car, pray, eat, and avoid needless harassment in public spaces?

YES.

3. **Affordable Housing Funding—I.** Would you support legislation to allow cities and towns to impose a fee on real estate transfers to generate revenue for affordable housing, with the ability to create local exemptions as appropriate?

YES.

4. **Affordable Housing Funding—II.** Would you support doubling the current Deeds Excise Tax (from \$4.56 per \$1,000 to \$9.12 per \$1,000), upon the sale of real property in Massachusetts, to create a new funding stream to be split evenly between affordable housing and climate resiliency?

YES.

5. **Social Housing.** Would you support the creation of a state social housing authority to produce and preserve mixed-income homes that are union-built, sustainable, collectively owned, affordable for all income levels, and financially self-sustaining?

YES.

6. **Tenant Protections.** Would you support providing municipalities with the authority to implement rent control, just cause eviction protections, stronger condominium conversion and foreclosure protections, anti-displacement zones, and options to help tenants manage the upfront costs of leasing an apartment?

YES.

7. **Tenant Opportunity to Purchase.** Would you support providing tenants of small, medium, and large multifamily properties with right of first refusal when the owner plans to put a building on the market, provided that they can make a bona fide offer to match the asking price in a reasonable period of time?

YES.

8. **Right to Counsel.** Would you support legislation to provide legal representation for low-income tenants in eviction proceedings?

YES.

9. **Eviction Sealing.** Eviction records create lasting stigma, are prone to error and impair access to stable housing. Would you support legislation to seal eviction records so that both tenants and landlords can move on with their lives?

YES.

10. **Zoning Reform—Part I.** Throughout Massachusetts, restrictive and exclusionary zoning laws make communities unaffordable and exacerbate residential segregation. Would you support the following steps....?

- a. **Prohibiting municipal and state zoning bylaws, ordinances, and land use decisions that discriminate based on race, socioeconomic status, or familial**

status?

YES.

b. Enabling municipalities to pass inclusionary zoning ordinances by a simple majority vote?

YES.

c. Enabling municipalities to pass zoning ordinances to eliminate parking requirements for multifamily residential development by a simple majority vote?

YES.

11. **Zoning Reform—Part II.** The Department of Housing & Community Development recently released guidelines for the 175 MBTA communities to have a zoning ordinance or bylaw that provides for at least one district of reasonable size near public transit in which multifamily housing is permitted as of right. Would you support extending this requirement to include *all* municipalities that have public transit available, as opposed to only MBTA communities?

YES.

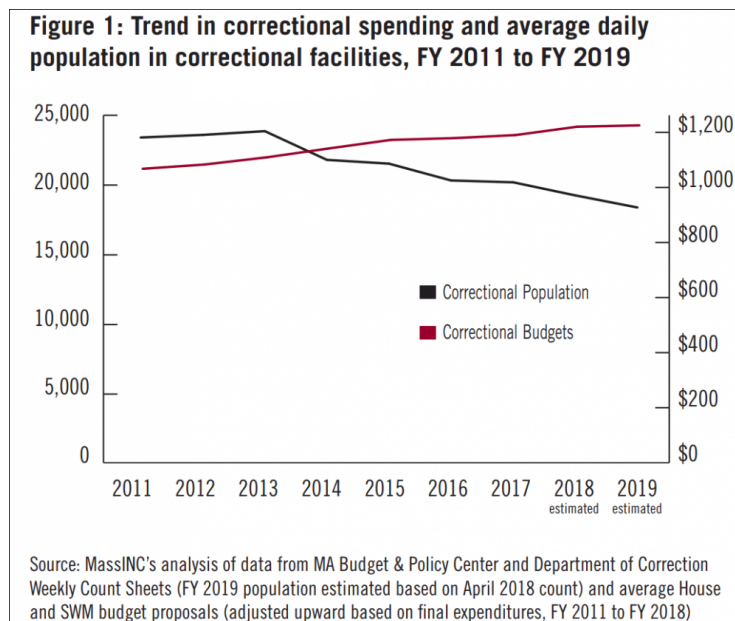
F. Racial and Social Justice

Massachusetts must continue to strive to be a state that welcomes and embraces all of its residents and combats prejudice and discrimination of all kinds, especially on the systemic and institutional level.

Mass incarceration in Massachusetts has proven socially and economically destructive, breaking apart communities across the state. From 2011 to 2016, [spending on prisons](#) grew faster than any other part of the Massachusetts budget, while funding for necessary services languished. The average cost per year to house an individual in the Massachusetts Department of Corrections is [more than \\$60,000](#), money that could be better reinvested into the communities that have suffered from decades of misguided and racially discriminatory “tough on crime” policies. To achieve “justice for all,” we need a judicial system that does not disproportionately target communities of color and the poor and that does not criminalize public health issues such as addiction.

Immigrants make up 16% of Massachusetts’s population; however, demagoguery against, or indifference to, immigrant populations has historically been a mainstay of Massachusetts politics. Even though the administration in Washington has changed, we have seen a deportation agenda from both Democratic and Republican presidents, and it is important for states like Massachusetts to take leadership in protecting and advancing the rights of our immigrant communities and making clear that all are welcome.

The correctional population in Massachusetts has declined, yet the state continues to increase the Department of Corrections budget.



Significant racial disparities exist in incarceration in Massachusetts.

Imprisonment by Race/Ethnicity (2019)	
White imprisonment rate (per 100,000)	63
Black imprisonment rate (per 100,000)	466
Hispanic imprisonment rate (per 100,000)	260
Racial/Ethnic Disparity in Imprisonment (2019)	
Black : white ratio	7.4
Hispanic : white ratio	4.1
Juveniles in Custody (2015)	
Total juveniles in custody	309
Committed	168
Detained	135
Diverted	0
Juvenile custody rate (per 100,000)	0
White custody rate (per 100,000)	18
Black custody rate (per 100,000)	166
Latino custody rate (per 100,000)	117
American Indian custody rate (per 100,000)	0
Asian custody rate	0

- 1. Please explain your principles and proposals relative to this issue, and what work you personally have done to advance them (legislation, community work, published writings, etc.).**

Due to racism both past and present, communities of color are disproportionately incarcerated and for longer periods of time. This continues to devastate working class & poor communities of color, tearing apart families. Families are emotionally traumatized from seeing parents and children ripped away and are often plummeted into poverty due to legal fees and losing their bread winner. We need to shift away from a punitive system that only breeds more hate & pain, and move to one that centers restorative justice.

This takes the form of investment in rehabilitation programs and reentry programs. Hiring more therapists and social workers for our schools & communities, stopping needless crimes made out of hate or desperation before they happen.

- 2. Police Accountability.** The 2020 police accountability legislation passed by the Massachusetts Legislature contained a number of steps forward, but important measures were left out. Would you support legislation to do the following?

- a. Eliminating qualified immunity for state and local police and correctional**

officers so that individuals whose constitutional rights are violated can have their fair day in court?

YES. I do believe that law enforcement officers need some protection, but not qualified immunity.

- b. **Supporting strict regulations on government use of face surveillance like those initially enacted by the House and Senate in 2020, before Governor Baker rejected them?**

YES.

- c. **Requiring a vote by a local legislative body (city council, town meeting) before a municipality can acquire military or surveillance equipment?**

YES.

3. **Alternative Crisis Response.** Do you support creating a grant program through the Executive Office of Health and Human Services to increase funding for non-law-enforcement, unarmed community-based response personnel to respond to emergency calls?

YES.

4. **Sentencing Reform.** The 2018 criminal justice reform bill was an important first step in reducing mass incarceration. However, in our “liberal” state, incarceration rates remain much higher than they are in other countries, and sentencing laws can be even more punitive than those in states viewed as conservative. Do you support the following reforms?

- a. **Eliminating mandatory minimums for all drug offenses?**

YES.

- b. **Raising the age of criminal majority from 18 to 21, in line with research that shows that young offenders served by a juvenile system are much less likely to reoffend and more likely to successfully transition to adulthood?**

YES.

- c. **Decriminalizing consensual sexual activity between adolescents, by creating an exception to the statutory rape law for youth [close in age](#)?**

YES.

- d. **Eliminating the sentence of life without parole, which is costly and has been shown to be racist in its application?**

YES.

5. **Prison Accountability.** Massachusetts legislators have the statutory right to make

unannounced visits to correctional facilities run by the state. Would you commit to exercising this right in order to improve accountability for the Department of Corrections?

YES.

6. **Solitary Confinement.** Although the 2018 Criminal Justice Reform Act contained provisions to reduce the excessive and harmful use of solitary confinement, the Department of Corrections has established policies and practices to [evade implementation of the spirit of these reforms](#). Would you support legislation to address this discrepancy by taking [measures](#) such as (but not limited to) providing all incarcerated people with access to at least 1 hour of structured programming each day for 5 days a week, and offering a minimum of 50 minutes of therapy per week to everyone in segregated confinement by qualified clinical mental health providers; and requiring that all people held in solitary confinement be given a minimum of 4 hours out of cell time?

YES.

7. **Prison Visitation.** Maintaining connections with friends and family outside prisons is one of the most important factors in ensuring successful reentry. In March 2018, the DOC severely limited the ability of prisoners to receive visits and the rights of family and friends to visit their loved ones in prison. ([Read more on this here.](#)) Would you support legislation to end these restrictions?

YES.

8. **Prison Profiteering—Part I.** While Massachusetts does not have private prisons, the DOC invites private companies to profit off the families of incarcerated individuals by price gouging, as incarcerated individuals have no alternatives but to buy from the sole providers of goods in prisons. Would you support ending such price gouging by the DOC for necessary items and requiring DOC to adequately supply incarcerated individuals with the basic requirements necessary for life and maintain good health and hygiene?

YES.

9. **Prison Profiteering—Part II.** The cost of phone calls can be as high as \$4-\$5 (or more) for 15 minutes of phone time for incarcerated individuals in some parts of Massachusetts. Do you support making phone calls free for incarcerated individuals?

YES.

10. **Prison Moratorium.** Would you support a moratorium on the construction of new prisons and jails in the Commonwealth?

YES.

11. **Expungement.** Would you support legislation to automatically expunge marijuana offenses with state-level coordination, firm deadlines, and a study on the impact of the expungements?

YES.

12. **Safe Communities Act.** Do you support the Safe Communities Act, which limits local and state police collaboration with federal immigration agents, bars law enforcement and court personnel from inquiring about immigration status, and ensures due process protections?

YES.

13. **Work and Family Mobility Act.** Do you support removing immigration status as a barrier to applying for a license or learner's permit?

YES.

14. **Data Equity.** Do you support allowing state agencies to collect, organize, and assemble public data on major ethnic subgroups for all racial groups to create more visibility for the diverse experiences within communities and enable policymakers and community organizations to be more responsive to community needs?

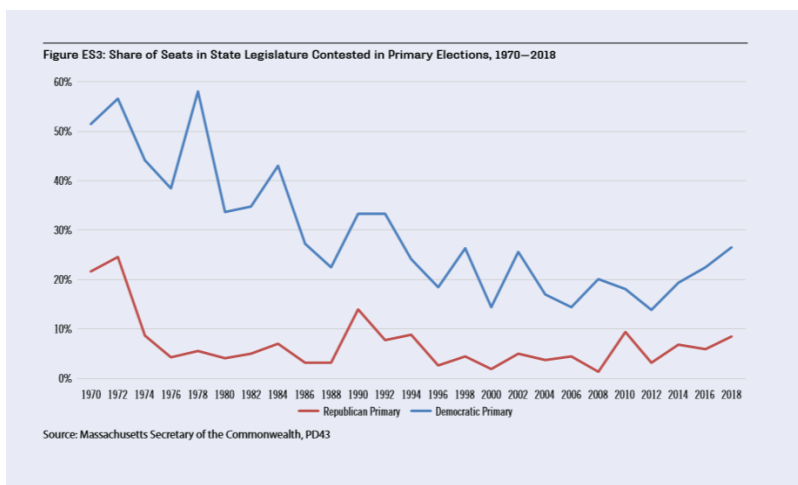
YES.

G. Good Government and Strong Democracy

A strong democracy depends on a transparent and representative government and an engaged public. Too often, however, we see centralized, unaccountable power and barriers to participation. An undemocratic, centralized power structure on Beacon Hill makes it easier for lobbyists to target the top and undermine the system. Despite recent reforms, a weak public records system stymies government accountability: MA is one of only two states where all three branches of state government claim to be exempt. A strong democracy requires an engaged electorate, but voter turnout in midterm elections, and especially local elections, remains low. Although election modernization legislation in 2014 and 2018 helped bring much-needed reforms, we still lag behind states in New England and around the country in making voting accessible (Maine, for instance, has allowed for Election Day Registration since the 1970s).

A centralized power system, a skewed campaign finance system, and restrictive voting laws together help create a situation in which our elections are the [least competitive in the country](#).

Our elections have grown less competitive over the past four decades.



Lower-income, ethnically diverse municipalities have lower voter turnout than whiter, more affluent communities, leading to reduced voice in state politics.

<u>Municipality</u>	<u>Turnout (Nov 2020)</u>
Springfield	52.67%
Lawrence	52.72%
New Bedford	55.27%
Chelsea	56.94%
Holyoke	58.89%
Lowell	59.71%
Fall River	60.04%
Southbridge	60.44%
Brockton	63.86%
Lynn	64.07%

Bottom 10 municipalities in terms of 2020 voter turnout

- 1. Please explain your principles and proposals relative to this issue, and what work you personally have done to advance them (legislation, community work, published writings, etc.).**

I have been advocating for government transparency for years at the local level. My hometown (Marblehead) has a bunch of stale politicians that have held positions for decades. With the same chairs of boards and no term limits, many of these elected officials become complacent and too connected. They are not above using bullying tactics with both employees and residents and they constantly violate ethics and open meeting laws. You can see at every meeting that their decision is made before anything is presented. I have been involved with a local non-profit called PowerUp01945. Our goal is to bring DEI to a town that is 96% white, promote civic engagement, transparency and change to government. We recently introduced articles on the town meeting warrant to include a diversity statement on the town website/literature (passed), for each of the town's 64 boards and committees to record their policies and procedures (an SOP) to be publicly posted (8 votes shy of passing), and another for all public meetings to be held hybrid which is now waiting to be chosen as a town ARPA funded project. I plan to continue this practice at the statehouse however unpopular it may be. I signed the "Voters Deserve to Know" pledge and am currently collecting signatures for a ballot initiative to make legislators' votes a matter of public record.

- 2. Legislative Transparency—Part I.** The Massachusetts Legislature lacks many basic transparency measures found in other state legislatures around the country. Would you vote in favor of making the following items available online...?
 - a. All committee votes, whether taken by electronic poll or formal roll call?**
YES.
 - b. All written testimony submitted for or against bills (with appropriate redactions)?**

YES.

- c. **Reader-friendly summaries of bills currently in or reported out of committee?**

YES.

3. **Legislative Transparency—Part II.** Legislators only vote to change the rules at the start of the legislative session, but all legislators can model transparency on their own throughout the session. Would you commit to doing the following...?

- a. **Standing for a recorded vote when a colleague asks for one on any amendment which you have co-sponsored?**

YES.

- b. **Making your committee votes available online on your website?**

YES.

4. **Public Records Law.** Massachusetts is the only state where the Governor's Office, the Legislature, and the Judiciary claim full exemptions from the public records laws. Would you support eliminating these exemptions?

YES.

5. **Expanding Access to Public Meetings.** During the pandemic, the ability to attend and participate in public meetings virtually has expanded the number of people who are able to participate, removing barriers faced by people with disabilities, people with small children, people with mobility issues, or people with scheduling conflicts (among many others).

- a. **Would you support updating Open Meeting Law so that people can choose to participate remotely in public meetings on a permanent basis, even after the pandemic emergency ends, and providing the necessary funds to municipalities to implement this?**

YES.

- b. **Would you advocate for continuing the practice of allowing people to testify virtually at legislative hearings?**

YES.

6. **Removing Barriers to Running.** The cost of child care can prove prohibitive to parents seeking to run for office. Would you support legislation to explicitly allow parents running for office to use campaign funds to pay for child care?

YES.

7. **Same Day Registration.** Massachusetts lags behind other states in making voting accessible for all. Do you support eliminating Massachusetts's arbitrary and exclusionary 20-day voter registration cutoff and allowing voters to register or update their registration at the polls on Election Day and during the early voting period?

YES.

8. **Local Elections.** Municipalities across Massachusetts have sought to expand the franchise for local elections, but remain hamstrung by the home rule process.

- a. **Would you support legislation to enable municipalities to expand the franchise to 16- and 17-year-olds for local elections?**

YES.

- b. **Would you support legislation to enable municipalities to expand the franchise to legal non-citizens (e.g., Green Card holders) for local elections?**

YES.

9. **Voting Rights Restoration.** Would you support restoring the franchise to incarcerated individuals serving time for felony convictions (Their right to vote was taken away by ballot twenty years ago)?

YES.

10. **Redistricting.** Would you support legislation to codify the goal of creating [influence districts, crossover districts, and coalition districts](#) in order to expand opportunities for representation and voice for communities of color?

YES.

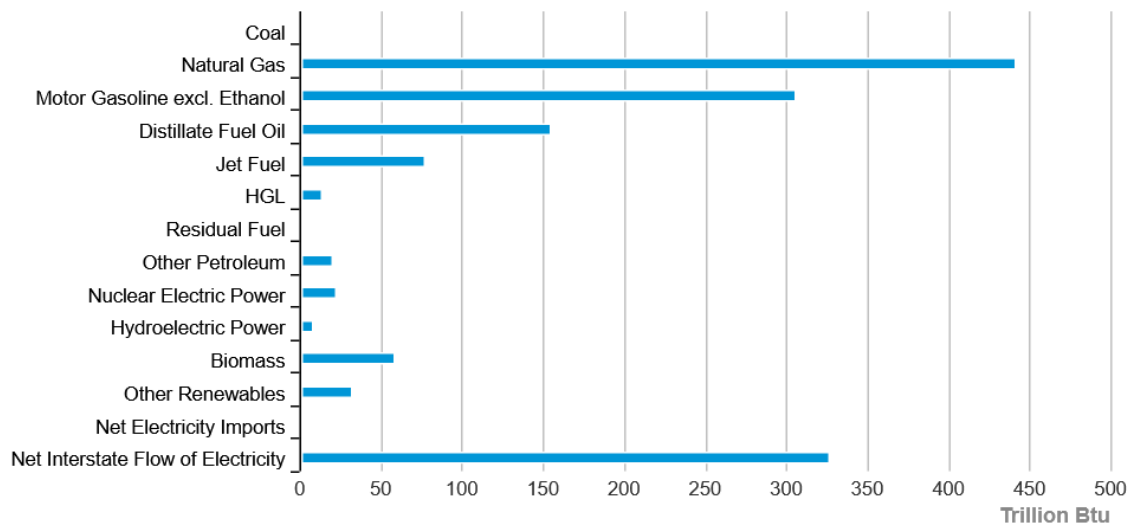
H. Sustainable Infrastructure and Environmental Protection

As a coastal state, Massachusetts will be hit particularly hard by climate change, but we are not responding with the necessary urgency. In order to avoid catastrophic climate change, global carbon emissions need to be [halved by 2030](#) and brought to net zero by 2050, and affluent countries and states must go further. In 2016, the Massachusetts Supreme Judicial Court ruled that the state has failed to meet its legal obligation to set and enforce annual limits on greenhouse gas emissions as outlined in the 2008 Global Warming Solutions Act. Setting and reaching these goals, as well as the goals of the 2021 Next Generation Roadmap law, will require the decarbonization of our state economy and a transition away from fossil fuels toward clean, renewable sources of energy. In light of congressional gridlock at the federal level, state government must take a role in accelerating this transition and ensuring that equity is at the forefront.

Public transit must play a role in decarbonizing our transportation system, as well as advancing complementary goals of equity and inclusion. However, Massachusetts politicians have lost their understanding of public transit as a public good that benefits all residents and businesses in Massachusetts, not just those who use it in their daily lives. The greatest evidence of this is their neglect of the MBTA: its debt has grown to nearly [\\$5 billion](#), and it would need [more than \\$10 billion](#) to bring infrastructure and equipment up to a state of good repair. Regional Transit Authorities that serve communities, including Gateway Cities across the state, face enormous capital needs as well.

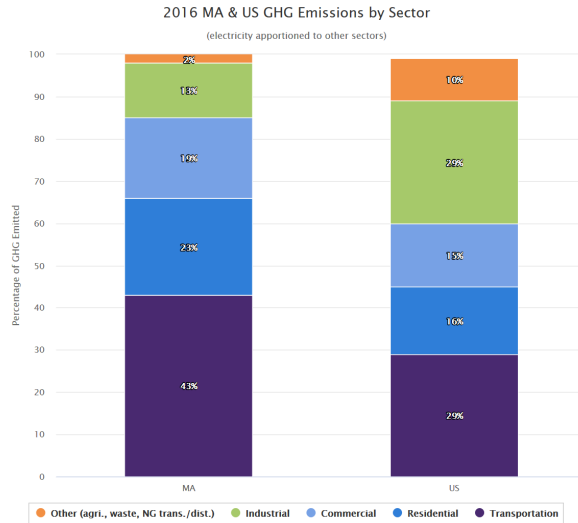
Despite recent progress, Massachusetts is still overwhelmingly dependent on fossil fuels.

Massachusetts Energy Consumption Estimates, 2019



Source: Energy Information Administration, State Energy Data System

Transportation is currently the largest contributor to greenhouse gas emissions in MA.



1. Please explain your principles and proposals relative to this issue, and what work you personally have done to advance them (legislation, community work, published writings, etc.).

8th Essex is a community entirely on the ocean, meaning it is a community that is entirely threatened by climate change. Rising sea levels and a dying ocean mean thousands of our neighbors will be displaced economically and literally because their houses will be underwater.

For the sake of my community, we have to start thinking big about this right now. We need immediate action, heavily reducing our consumption of greenhouse emitting fuels and transitioning to renewable energy resources. Projects like the proposed Peabody Peaker Plant should not even be considered. We need large investments in renewable energies, the Massachusetts shore line needs to be dotted with wind farms. Harbors should be covered with solar panels, a project I have been passionately working on in my role at the Marblehead Harbormaster's office.

Most importantly, we need to be making sure our workers are being uplifted in the process. I am proud of my work with the North Shore Labor Council to work with workers in factories and building trades to make sure that renewable energy and union go hand in hand.

2. Next Generation Roadmap. At the start of this legislative session, the Legislature passed a bill that requires emissions reductions of 50% from 1990 levels by 2030, 75% by 2040, and at least 85% by 2050. How can the Commonwealth exceed these targets, and what will your priorities be in advocating for that?

As stated before, we need to massively invest in renewable energies while

stopping the expansion of projects like the proposed Peabody Peaker Plant. We must also expand our public transportation services while also electrifying our busses and trains.

3. **100% Renewable Energy.** Scientists have argued that, with existing technologies, the US could supply 100% of energy needs with renewable sources. Would you support requiring that Massachusetts adopt a target of sourcing electricity from 100% renewable energy sources by 2030?

YES.

4. **Rooftop Solar.** Would you support requiring that all new construction be built to accommodate solar energy installations?

YES.

5. **Fossil-Fuel-Free Construction.** Would you support legislation to enable municipalities to ban oil and gas heating pipes in new construction?

YES.

6. **Fossil Fuel Infrastructure.** Do you oppose the expansion of fossil fuel infrastructure in the state?

YES.

7. **Environmental Justice.** Would you support requiring the Energy Facilities Siting Board to consider environmental justice, public health, and climate impacts in decision-making on siting projects?

YES.

8. **Just Transition.** Do you support the creation of a Just Transition Office to assist workers that are displaced in the transition from fossil fuels to clean energy?

YES.

9. **Electrifying Public Transit.** In Massachusetts, 43 percent of GHG emissions in 2016 came from transportation infrastructure and vehicles. Tackling this will require a shift away from cars and toward public transit, as well as electrification of both. Would you support the electrification of the MBTA bus fleet by 2030, RTA fleets by 2035, and the MBTA rail system by 2035?

YES.

10. **Free Public Transit.** Do you support making public transit in the Commonwealth fare-free?

YES.

11. **Regional Transportation Funding.** The unavailability of state funds for infrastructure

spending has meant the deterioration of regional transportation systems. Do you support allowing municipalities to place a question on the ballot to raise revenue for local and regional transportation projects?

YES.

III. ADDITIONAL COMMENTS

Use this space to add any other issues important to your vision for Massachusetts or any other matter you think progressive voters should know about your candidacy.